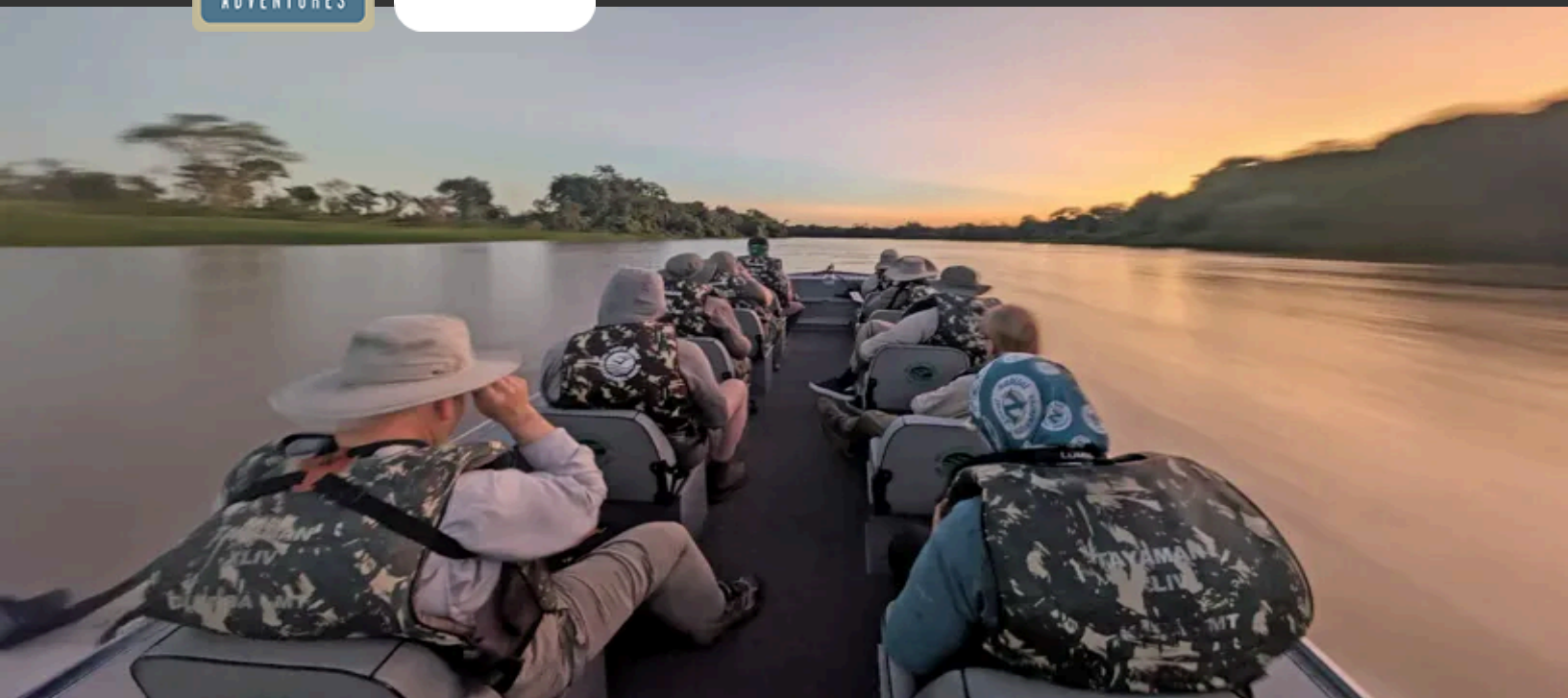




Discovering Our Planet Together



Jaguars & Wildlife of Brazil's Pantanal

An In-Depth Foray into South America's Grandest Wildlife Realm



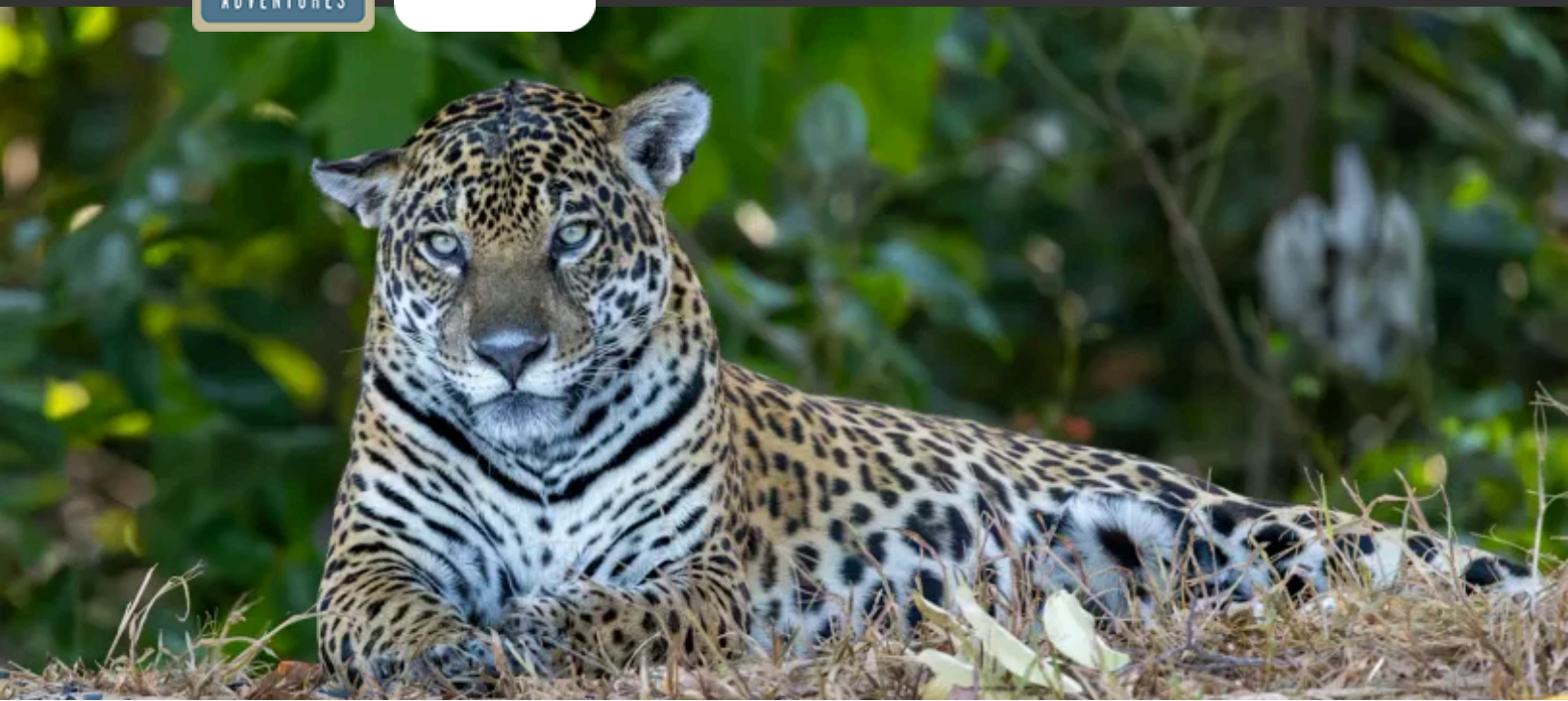
Discovering Our Planet Together

Table of Contents:

Trip Overview	3
Trip Itinerary	4
Trip Accommodations	8
What Makes Nat Hab Different?	10
Dates & Pricing Information	12
Trip Extensions	17



Discovering Our Planet Together



Trip Details:

Days

11 Days /
May–Oct

Price

From
\$13995
(+Air)

Jaguars & Wildlife of Brazil's Pantanal

An In-Depth Foray into South America's Grandest Wildlife Realm

While the Amazon may be better known, the Pantanal offers South America's greatest wildlife extravaganza. This UNESCO Biosphere Reserve is the world's largest seasonal floodplain, sprawling over 75,000 square miles in the heart of the continent and containing its densest concentration of wildlife. The vast mosaic of marsh and islands is home to 10 million caiman, 650 bird species and 100 different mammals, including capybara, maned wolf and giant river otter. The Pantanal's freshwater wetlands support a profusion of aquatic fauna that attracts a host of predators, creating a huge, intricate food chain. At the top is the elegant and elusive jaguar—and our in-depth Pantanal adventure offers the world's best chance to see them! On foot, by boat and 4x4, explore the verdant recesses of South America's largest wildlife sanctuary—you'll find no more epic Pantanal safari!

Trip Highlights

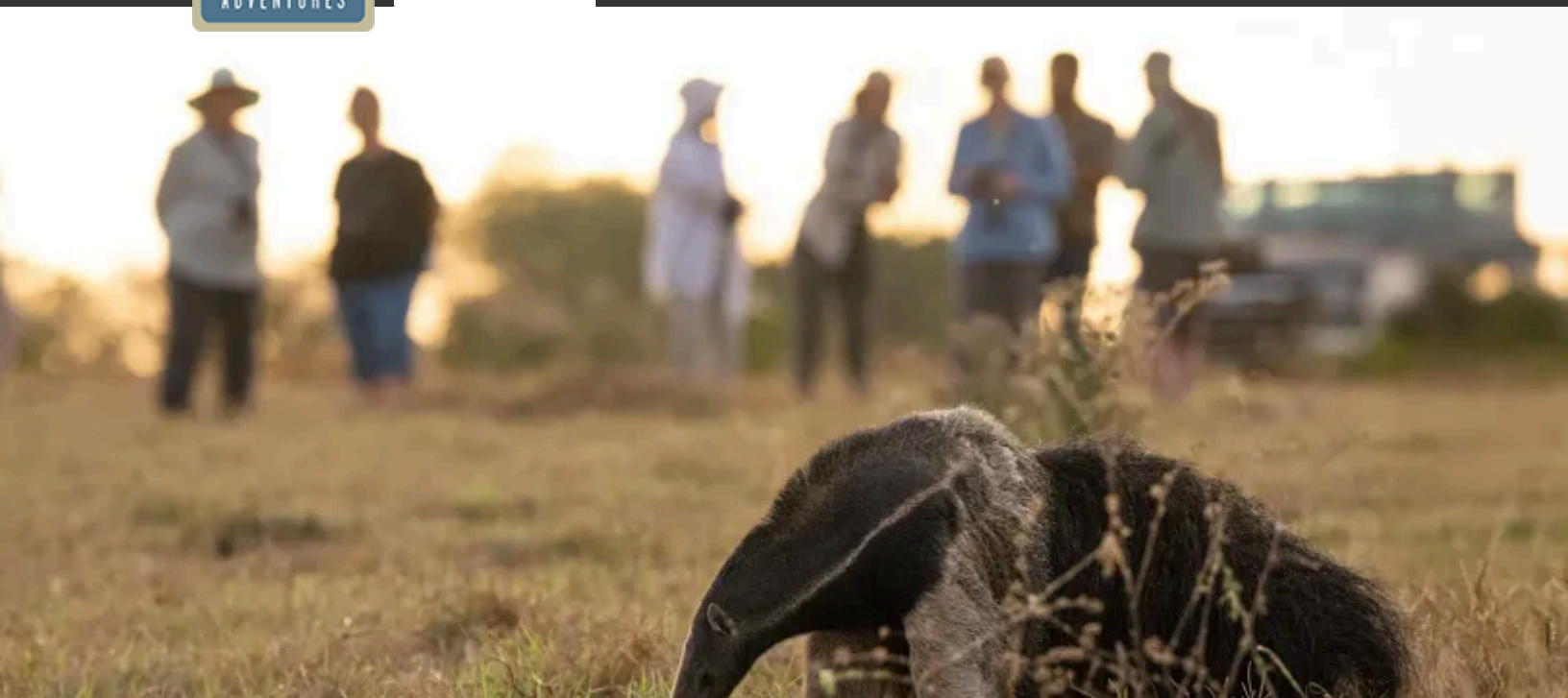
Alongside expert naturalist guides, make five separate boat excursions from Porto Jofre—the best place on the planet to spot jaguars in the wild

Explore by boat in the north, then on 4x4 safari drives and guided walks in the south—you won't find a more varied or comprehensive Pantanal itinerary

Enjoy an exclusive stay at Caiman Ecological Refuge, our remote and secluded base to seek out the giant anteater, tapir, ocelot and hyacinth macaw



Discovering Our Planet Together



Itinerary At A Glance

Day 1

Sao Paulo, Brazil

Day 2

Sao Paulo / Cuiaba / North Pantanal

Day 3

Exploring the North Pantanal

Day 4

North Pantanal / Porto Jofre—Jaguar Viewing

Days 5 & 6

Porto Jofre—Jaguar & Wildlife Viewing

Day 7

Porto Jofre / South Pantanal—Private Flight to Caiman Ecological Refuge

Days 8 & 9

Exploring the South Pantanal

Jaguars & Wildlife of Brazil's Pantanal Itinerary

An In-Depth Foray into South America's Grandest Wildlife Realm

Day 1: Sao Paulo, Brazil

Arrive in Sao Paulo and transfer to our boutique hotel in the upscale Jardins district, a leafy, low-rise enclave in the heart of this burgeoning city. Our Brazil adventure begins with a welcome dinner this evening.





Discovering Our Planet Together

Itinerary At A Glance

Day 10

Caiman / Private Flight to Campo Grande / Sao Paulo

Day 11

Sao Paulo / Depart

Day 2: Sao Paulo / Cuiaba / North Pantanal

A full day of travel is in store to reach our destination as we first fly this morning to Cuiaba, then transfer by road to Araras Ecolodge in the northern Pantanal. Declared a World Heritage Site and Biosphere Reserve by UNESCO in 2000, the Pantanal's vast expanse of wet marshlands and dry islands is South America's primary wildlife sanctuary. Its name derives from the Portuguese word *pantano*, meaning "swamp." With rhythmic regularity, this vast depression in the center of South America floods with the annual rains, submerging most of its environs. As the waters recede during the dry season, they leave a mosaic of pools and marshes where a plethora of life flourishes in intense concentrations. Some 3,500 different plants thrive here, and the Pantanal is home to 10 million caiman, 650 bird species, 400 kinds of fish, myriad reptiles and amphibians, and more than 100 mammal species. Wandering the nature trails around the lodge, we get our first sense of the wondrous biodiversity surrounding us.

Day 3: Exploring the North Pantanal

Covering 75,000 square miles across Brazil, Bolivia and Paraguay, the Pantanal is the world's largest wetland, containing 12 subregional ecosystems including semi-arid woodland and tropical savanna. Our immersion begins with a morning nature walk with our Expedition Leader and local guides who are resident experts on the flora and fauna. We'll hope to see some of the region's threatened species, including giant armadillo and capybara, plus spectacular birdlife. While their habitat is under duress due to the expansion of ranching, mining and farming, it is reassuring to know our presence contributes to the economic value of conserving this incomparable wildlife realm. This afternoon, explore the Pantanal savanna by safari vehicle, then finish our day's adventures with a night drive, hoping to spot nocturnal wildlife en route to the lodge.

Day 4: North Pantanal / Porto Jofre—Jaguar Viewing

On a sunrise nature walk from our ecolodge, listen to the chorus of birdsong and monkey calls announcing a new day. After breakfast, depart on a scenic half-day drive to Porto Jofre via the Trans-Pantanal Highway, which traverses some of the best wildlife-viewing areas in the ecosystem. Along this remote dirt road that crosses 123 bridges, search for caiman, capybara, giant anteater, anaconda, jabiru stork, macaws and more. Our destination is Porto Jofre, where the highway ends at the Cuiaba River—an important port for transporting cattle and agricultural products from the Pantanal along the road artery to the town of Pocone and beyond. After lunch on arrival, set out in open skiffs for our first jaguar watch, scanning the riverbanks for glimpses of the stealthy feline hunters. This region has the highest density of jaguars in the entire Pantanal, and our odds of seeing them are excellent, especially from mid-June to mid-October. The jaguar—the largest wild cat in the Americas—is the top predator in the ecosystem, drawn to the abundance of food sources that thrive here.



Discovering Our Planet Together

Days 5 & 6: Porto Jofre—Jaguar & Wildlife Viewing

The area around Porto Jofre offers exceptional wildlife encounters, and our focus is on sighting jaguars and giant otters. We look for them and a multitude of other Pantanal species, including caiman, capybara, toucans and howler monkeys, on private morning and afternoon small-boat excursions. Outings on the river also reveal scores of waterbirds, reptiles and plants that thrive in the sprawling mosaic of lakes, lagoons, rivers and marshes. Fish flourish in this freshwater sea, too, and as the water level drops seasonally in the lakes and channels, fishermen can sometimes catch dorado, pacu and traíra by hand. Birds large and small fly overhead and feed at eye level.

Day 7: Porto Jofre / South Pantanal—Private Flight to Caiman Ecological Refuge

This morning, fly via chartered small plane directly to Caiman Ecological Refuge, enjoying dramatic aerial views and avoiding a rugged 10-hour drive. Deep in the green recesses of the South Pantanal, this renowned ecolodge is our private base for exploration. It lies at the remote heart of a 130,000-acre sustainable cattle ranch, and the atmosphere reflects the distinctive local cowboy culture that taps 200 years of combined Portuguese, Paraguayan and indigenous traditions. The lodge was the first ecotourism operation in the region and remains a conservation leader. When the refuge was established, 10% of the ranch acreage was set aside as a private conservation area, off-limits to cattle but open to visitors. The protected area, chosen with the aid of research scientists from the University of Sao Paulo, is remarkably diverse, with habitats encompassing wooded and scrubby savanna, open pasture, stands of caranda palm, hammock forests, streams and seasonal channels—all providing sustenance for numerous Pantanal species, including Brazilian tapir. This afternoon, we head out on a private wildlife drive in the Caiman Ecological Refuge, perhaps providing our first jaguar sighting in the south.

Days 8 & 9: Exploring the South Pantanal

A range of activities in the refuge offers varied perspectives on the South Pantanal. Depending on seasonal conditions, we may take nature walks and day and night 4x4 safaris in open-sided trucks. Local guides join our Expedition Leader to reveal and interpret the area's many natural phenomena. Wildlife abounds in the vicinity, and the refuge is the site of the Onçafari Jaguar Project. This new conservation initiative aims to promote wildlife ecotourism in the Pantanal by habituating jaguars to vehicles so people can observe them while on safari. With patience and luck, we hope to be among the fortunate few to see wild jaguars here, as sightings continue to increase with concerted conservation efforts. On clear nights from mid-June to mid-October, the starry skies overhead are spectacular, and we may have the chance to view planets and constellations through powerful telescopes during evening astronomy programs around the campfire. Our last night at the lodge holds a special treat: enjoy a traditional Pantaneiro cowboy dinner outdoors, with spit-roasted meat and other favorite local dishes.



Day 10: Caiman / Private Flight to Campo Grande / Sao Paulo

Awaken to the symphony of tinamous and parrots, and savor the South Pantanal's tranquility before departing our ecolodge on a private chartered flight to Campo Grande. From there, we fly to Sao Paulo, a cosmopolitan metropolis and cultural melting pot that is the largest city in South America. This evening, gather for a farewell dinner and reflect on all the adventures we've had.

Day 11: Sao Paulo / Depart

For guests not continuing on our Iguazu Falls Extension, enjoy some exploration on your own if time permits before your departure for the airport. Visit the Sao Paulo Museum of Art, considered to house the most important collection of European art in the Southern Hemisphere, or stroll through Trianon Park, a tropical forest oasis with myriad paths leading you to native palms and trees, including Pau Brasil (the Brasilwood tree, after which the country is named), and more than 29 species of resident birds. An airport transfer is provided to meet homeward flights.



Discovering Our Planet Together



Accommodation Details:

Araras Ecolodge

Hotel Pantanal Norte

Caiman Ecological Refuge

Tivoli Mofarrej

For detailed descriptions, visit
nathab.com/south-america/brazil-adventure/accommodations

Jaguars & Wildlife of Brazil's Pantanal Accommodations

An In-Depth Foray into South America's Grandest Wildlife Realm



Araras Ecolodge

Located in the northern sector of the Pantanal, South America's premier wildlife sanctuary, this rustic lodge enjoys a superb location for exploring the region's varied habitats and intense biodiversity.



Hotel Pantanal Norte

Situated in the heart of the Pantanal's best jaguar habitat, this remote family-run hotel is optimally located for jaguar tracking and wildlife viewing along the rivers that lace the region.

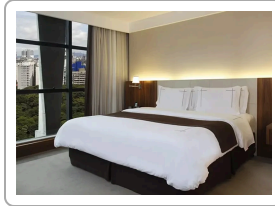


Caiman Ecological Refuge

Located within an enormous private reserve deep in the heart of the Pantanal, this ecolodge offers comfortable accommodations, varied activities, and by far the best wildlife viewing in the area.



Discovering Our Planet Together



Tivoli Mofarrej

Located in São Paulo's upscale Jardins neighborhood, this award-winning luxury hotel maximizes sweeping city views from the rooftop bar, restaurant and swimming pool.



No One Shows You the Pantanal in This Much Depth

With the world's largest wetland at the heart of tropical Brazil, the country is a mecca for wildlife lovers. And our intensive itinerary immerses you in the Pantanal in greater depth than any other trip we're aware of. See what sets this adventure apart:

1

The Very Best Locations for Wildlife Viewing

In the Pantanal, wildlife is even more abundant than in the Amazon. We may see Brazilian tapir, capybara, giant armadillo, giant river otter, maned wolf, caiman and the top prize for most wildlife watchers, the elusive jaguar. But you can't stay just anywhere in this massive marsh and expect those rewards. An itinerary must be strategically based around the best wildlife-viewing locations, and this one won't let you down.

2

More Time in the Pantanal from Multiple Perspectives

We spend *seven full days* at three different locations in both the north and south Pantanal to fully immerse you in this UNESCO Biosphere Reserve. You'll explore this vast mosaic of flooded marshlands, dry islands and savanna via multiple means, from nature walks and 4x4 drives to boat rides and canoe safaris—each mode revealing a new vantage point on the varied landscapes and their wild inhabitants.

3

Private Chartered Flight from North to South—a Nat Hab Exclusive!

Getting from the northern part of the Pantanal to the south can be a challenge. But rather than subject you to what most travelers must endure—a 10-hour drive over rough roads, plus two short commercial flights in between—we charter private planes to fly directly to Caiman Ecological Refuge. It's not only a far more comfortable and efficient option, but you'll get a 360° aerial view that reveals the vastness of the Pantanal—a perspective few visitors get to see.

4

Our Lodgings—including Caiman Ecological Refuge—Immerse You in Nature

We choose accommodations for their superb locations where wildlife viewing is best. We spend three nights in the remote Porto Jofre region, where more jaguars are seen than anywhere else. Another highlight is Caiman Ecological Refuge, part of an acclaimed private research, conservation and ecotourism initiative. Unlike more-touristed Pantanal accommodations, this exclusive ecolodge enjoys a remote, private setting, with ever-increasing jaguar sightings.



Discovering Our Planet Together

5

A Very Small Group (11 Travelers Max) Ensures Intimate Wildlife Encounters

To foster the most meaningful nature encounters, we limit our group to no more than 11 travelers. A small group also ensures that your needs and expectations are attentively met with personalized care from our Expedition Leader.

6

Your Expedition Leader is a Top Professional Naturalist

Nat Hab has a well-deserved international reputation for the highest-quality Expedition Leaders. Our Brazil naturalist guides average 10 years of experience, with additional training and resources from WWF scientists. In the Pantanal, we are also joined by local guides from each lodge who are resident experts in their region's flora and fauna. **See Expedition Leader bios** and traveler comments regarding the quality of our leaders.

7

Our Quality-Value Guarantee Ensures Your Exceptional Brazil Adventure

With Natural Habitat Adventures, you receive our exclusive guarantee that clearly states that we will meet the high expectations we set forth in our promotional materials. To our knowledge, this is the most ambitious guarantee made by any adventure travel company.

8

Feel Good About Your Carbon-Neutral Journey

We care deeply about our planet, as we know you do. When you travel with us, the carbon emissions from your trip are 100% offset—including your round-trip flights from home. Natural Habitat Adventures has been the world's first carbon-neutral travel company since 2007.

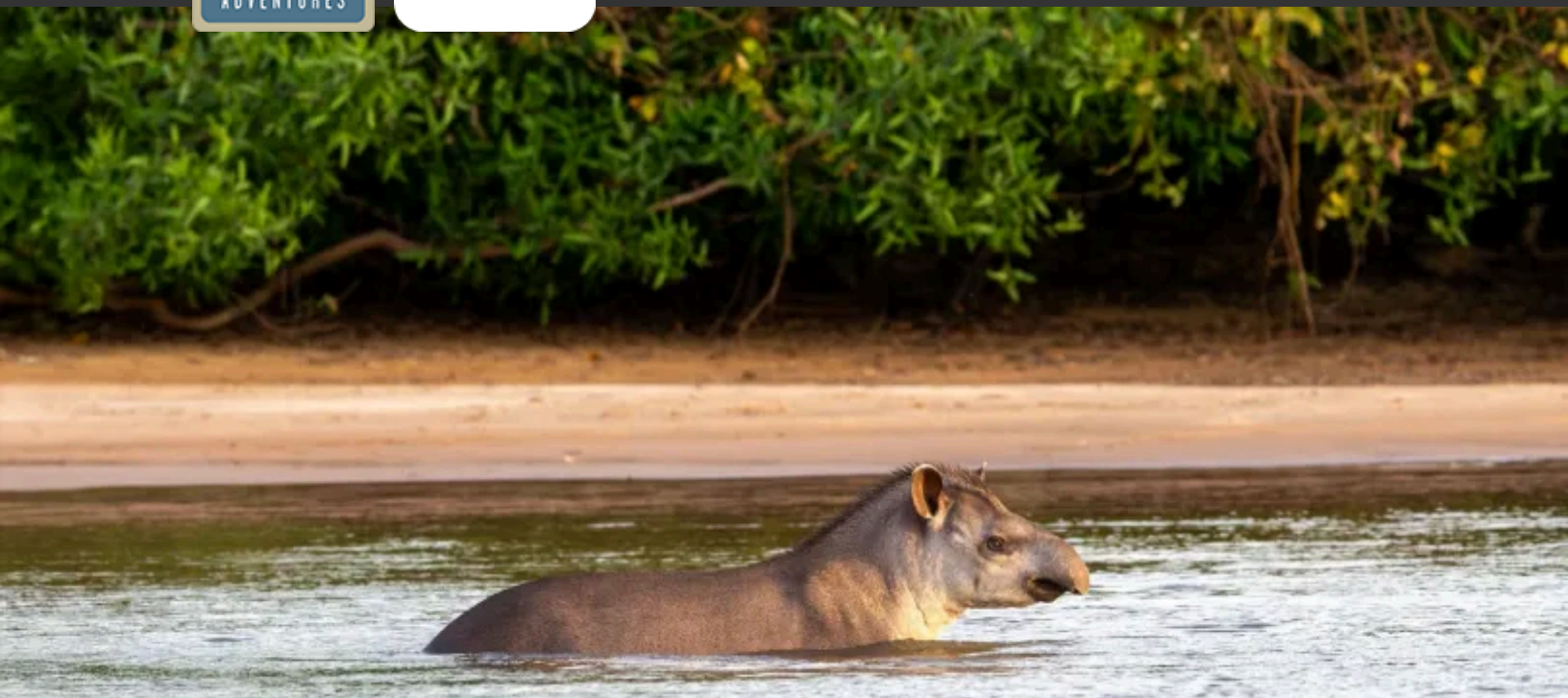
9

Natural Habitat Adventures is WWF's Travel Partner

Because of our commitment to environmentally friendly travel, as well as the exceptional quality of our small-group nature adventures, World Wildlife Fund, the world's leading environmental conservation organization, has named Natural Habitat Adventures its worldwide travel partner—a designation that makes us exceedingly proud!



Discovering Our Planet Together



Dates & Pricing Summary:

Prices:
From \$13995
(+Air)

Group Size:
Limited to 11
Travelers

Jaguars & Wildlife of Brazil's Pantanal Dates, Pricing & Info

An In-Depth Foray into South America's Grandest Wildlife Realm

2026 Departures

Departure	Return	Notes
May 18, 2026	May 28, 2026	\$14395 USD (+internal air) Habitat Club Pricing Available
May 21, 2026	May 31, 2026	\$16095 USD (+internal air) Photo Expedition
May 24, 2026	Jun 3, 2026	\$14395 USD (+internal air)
May 27, 2026	Jun 6, 2026	\$14395 USD (+internal air)
May 30, 2026	Jun 9, 2026	\$14395 USD (+internal air) Habitat Club Pricing Available
Jun 5, 2026	Jun 15, 2026	\$14395 USD (+internal air)
Jun 8, 2026	Jun 18, 2026	\$16095 USD (+internal air) Photo Expedition
Jun 11, 2026	Jun 21, 2026	\$14395 USD (+internal air)
Jun 14, 2026	Jun 24, 2026	\$14395 USD (+internal air)
Jun 17, 2026	Jun 27, 2026	\$14395 USD (+internal air)
Jun 20, 2026	Jun 30, 2026	\$13995 USD (+internal air)
Jun 23, 2026	Jul 3, 2026	\$16095 USD (+internal air)



Discovering Our Planet Together

Dates & Pricing Summary:

Prices:
From \$13995
(+Air)

Group Size:
Limited to 11
Travelers

Departure	Return	Notes
		Photo Expedition
Jun 26, 2026	Jul 6, 2026	\$14395 USD (+internal air)
Jun 29, 2026	Jul 9, 2026	\$14395 USD (+internal air)
Jul 2, 2026	Jul 12, 2026	\$14395 USD (+internal air)
Jul 5, 2026	Jul 15, 2026	\$16095 USD (+internal air) Photo Expedition
Jul 8, 2026	Jul 18, 2026	\$14395 USD (+internal air)
Jul 11, 2026	Jul 21, 2026	\$16095 USD (+internal air) Photo Expedition
Jul 14, 2026	Jul 24, 2026	\$14395 USD (+internal air)
Jul 17, 2026	Jul 27, 2026	\$14395 USD (+internal air)
Jul 20, 2026	Jul 30, 2026	\$14395 USD (+internal air)
Jul 23, 2026	Aug 2, 2026	\$14395 USD (+internal air)
Jul 26, 2026	Aug 5, 2026	\$14395 USD (+internal air)
Jul 29, 2026	Aug 8, 2026	\$14395 USD (+internal air)
Aug 4, 2026	Aug 14, 2026	\$14395 USD (+internal air)
Aug 7, 2026	Aug 17, 2026	\$16095 USD (+internal air) Photo Expedition
Aug 10, 2026	Aug 20, 2026	\$14395 USD (+internal air)
Aug 13, 2026	Aug 23, 2026	\$14395 USD (+internal air)
Aug 16, 2026	Aug 26, 2026	\$14395 USD (+internal air)
Aug 19, 2026	Aug 29, 2026	\$14395 USD (+internal air)
Aug 22, 2026	Sep 1, 2026	\$13995 USD (+internal air)
Aug 25, 2026	Sep 4, 2026	\$16095 USD (+internal air) Photo Expedition
Aug 28, 2026	Sep 7, 2026	\$14395 USD (+internal air)
Aug 31, 2026	Sep 10, 2026	\$14395 USD (+internal air)
Sep 3, 2026	Sep 13, 2026	\$14395 USD (+internal air)
Sep 6, 2026	Sep 16, 2026	\$14395 USD (+internal air)
Sep 9, 2026	Sep 19, 2026	\$16095 USD (+internal air) Photo Expedition
Sep 12, 2026	Sep 22, 2026	\$14395 USD (+internal air)
Sep 15, 2026	Sep 25, 2026	\$14395 USD (+internal air)
Sep 18, 2026	Sep 28, 2026	\$14395 USD (+internal air) Habitat Club Pricing Available
Sep 21, 2026	Oct 1, 2026	\$13995 USD (+internal air)
Sep 24, 2026	Oct 4, 2026	\$14395 USD (+internal air)
Sep 27, 2026	Oct 7, 2026	\$16095 USD (+internal air) Photo Expedition



Discovering Our Planet Together

Dates & Pricing Summary:

Prices:
From \$13995
(+Air)

Group Size:
Limited to 11
Travelers

Departure	Return	Notes
Sep 30, 2026	Oct 10, 2026	\$14395 USD (+internal air)
Oct 3, 2026	Oct 13, 2026	\$14395 USD (+internal air)
Oct 6, 2026	Oct 16, 2026	\$14395 USD (+internal air)
Oct 9, 2026	Oct 19, 2026	\$16095 USD (+internal air) Photo Expedition

2027 Departures

Departure	Return	Notes
! Prices not confirmed for 2027		
May 17, 2027	May 27, 2027	\$14595 USD (+internal air) Habitat Club Pricing Available
May 20, 2027	May 30, 2027	\$16495 USD (+internal air) Photo Expedition
May 23, 2027	Jun 2, 2027	\$14295 USD (+internal air)
May 26, 2027	Jun 5, 2027	\$14295 USD (+internal air)
May 29, 2027	Jun 8, 2027	\$14295 USD (+internal air)
Jun 1, 2027	Jun 11, 2027	\$14295 USD (+internal air)
Jun 4, 2027	Jun 14, 2027	\$14295 USD (+internal air)
Jun 7, 2027	Jun 17, 2027	\$16795 USD (+internal air) Photo Expedition
Jun 10, 2027	Jun 20, 2027	\$14295 USD (+internal air)
Jun 13, 2027	Jun 23, 2027	\$14295 USD (+internal air)
Jun 16, 2027	Jun 26, 2027	\$14295 USD (+internal air)
Jun 19, 2027	Jun 29, 2027	\$14295 USD (+internal air)
Jun 22, 2027	Jul 2, 2027	\$16795 USD (+internal air) Photo Expedition
Jun 25, 2027	Jul 5, 2027	\$14295 USD (+internal air)
Jun 28, 2027	Jul 8, 2027	\$14595 USD (+internal air)
Jul 1, 2027	Jul 11, 2027	\$14295 USD (+internal air)
Jul 4, 2027	Jul 14, 2027	\$14295 USD (+internal air)
Jul 7, 2027	Jul 17, 2027	\$14295 USD (+internal air)
Jul 13, 2027	Jul 23, 2027	\$16495 USD (+internal air) Photo Expedition
Jul 16, 2027	Jul 26, 2027	\$14295 USD (+internal air)
Jul 19, 2027	Jul 29, 2027	\$14295 USD (+internal air)
Jul 22, 2027	Aug 1, 2027	\$14295 USD (+internal air)
Jul 28, 2027	Aug 7, 2027	\$14295 USD (+internal air)
Jul 31, 2027	Aug 10, 2027	\$14295 USD (+internal air)
Aug 3, 2027	Aug 13, 2027	\$14295 USD (+internal air)



Discovering Our Planet Together

Dates & Pricing Summary:

Prices:
From \$13995
(+Air)

Group Size:
Limited to 11
Travelers

Departure	Return	Notes
! Prices not confirmed for 2027		
Aug 6, 2027	Aug 16, 2027	\$16495 USD (+internal air) Photo Expedition
Aug 9, 2027	Aug 19, 2027	\$14295 USD (+internal air)
Aug 12, 2027	Aug 22, 2027	\$14295 USD (+internal air)
Aug 15, 2027	Aug 25, 2027	\$14295 USD (+internal air)
Aug 18, 2027	Aug 28, 2027	\$14295 USD (+internal air)
Aug 21, 2027	Aug 31, 2027	\$14595 USD (+internal air)
Aug 24, 2027	Sep 3, 2027	\$16495 USD (+internal air) Photo Expedition
Aug 27, 2027	Sep 6, 2027	\$14295 USD (+internal air)
Aug 30, 2027	Sep 9, 2027	\$14295 USD (+internal air)
Sep 5, 2027	Sep 15, 2027	\$14295 USD (+internal air)
Sep 8, 2027	Sep 18, 2027	\$16495 USD (+internal air) Photo Expedition
Sep 11, 2027	Sep 21, 2027	\$14295 USD (+internal air)
Sep 14, 2027	Sep 24, 2027	\$14295 USD (+internal air)
Sep 17, 2027	Sep 27, 2027	\$14295 USD (+internal air)
Sep 20, 2027	Sep 30, 2027	\$14295 USD (+internal air)
Sep 23, 2027	Oct 3, 2027	\$14295 USD (+internal air)
Sep 26, 2027	Oct 6, 2027	\$16495 USD (+internal air) Photo Expedition
Sep 29, 2027	Oct 9, 2027	\$14295 USD (+internal air)
Oct 2, 2027	Oct 12, 2027	\$14295 USD (+internal air)
Oct 5, 2027	Oct 15, 2027	\$14295 USD (+internal air)
Oct 8, 2027	Oct 18, 2027	\$16495 USD (+internal air) Photo Expedition

2028 Departures

Departure	Return	Notes
! Prices and dates not confirmed for 2028		
Jun 22, 2028	Jul 2, 2028	\$16495 USD (+internal air) Photo Expedition
Sep 14, 2028	Sep 24, 2028	\$14295 USD (+internal air)



Pricing

See <https://nathab.com/south-america/brazil-adventure/dates-fees> for the latest pricing details.

Included

- **Trip price includes:** Accommodations, services of Nat Hab's professional Expedition Leader(s), local guides and lodge staff, all meals from dinner on Day 1 through breakfast on Day 11, some gratuities, airport transfers on Day 1 and final day, all activities and entrance fees, all taxes, permits and service fees.
- **Internal air cost includes:** All scheduled and private charter flights within the itinerary (this will be listed separately on our invoicing).

Not Included

Travel to and from the start and end point of your trip, alcoholic beverages, some gratuities, passports and visa fees, optional activities, items of a personal nature (phone calls, laundry and internet, etc.), airline baggage fees, airport and departure taxes (if any), required medical evacuation insurance, optional travel protection insurance.

Mandatory Insurance

Since the areas we travel to are remote and wild (that's why we go there!), we require that all guests have, at minimum, medical evacuation insurance for this program. This is for the safety of all guests. We require that your chosen independent insurance plan includes at least \$250,000 in medical evacuation coverage.

To protect your investment and to provide peace of mind while you travel, we also strongly recommend purchasing comprehensive travel insurance. Plans may cover everything from medical treatment to trip cancellations and delays and lost luggage. Please contact our office if you would like more information about the medical evacuation and comprehensive travel insurance policies we offer by calling 800-543-8917.

Getting There & Getting Home

This trip begins and ends in Sao Paulo. Because this is a long international journey, **we recommend that you arrive the night before Day 1** to rest from your travels and begin the trip refreshed. For guests who come in early, recommended hotels will be included in your pre-departure materials.

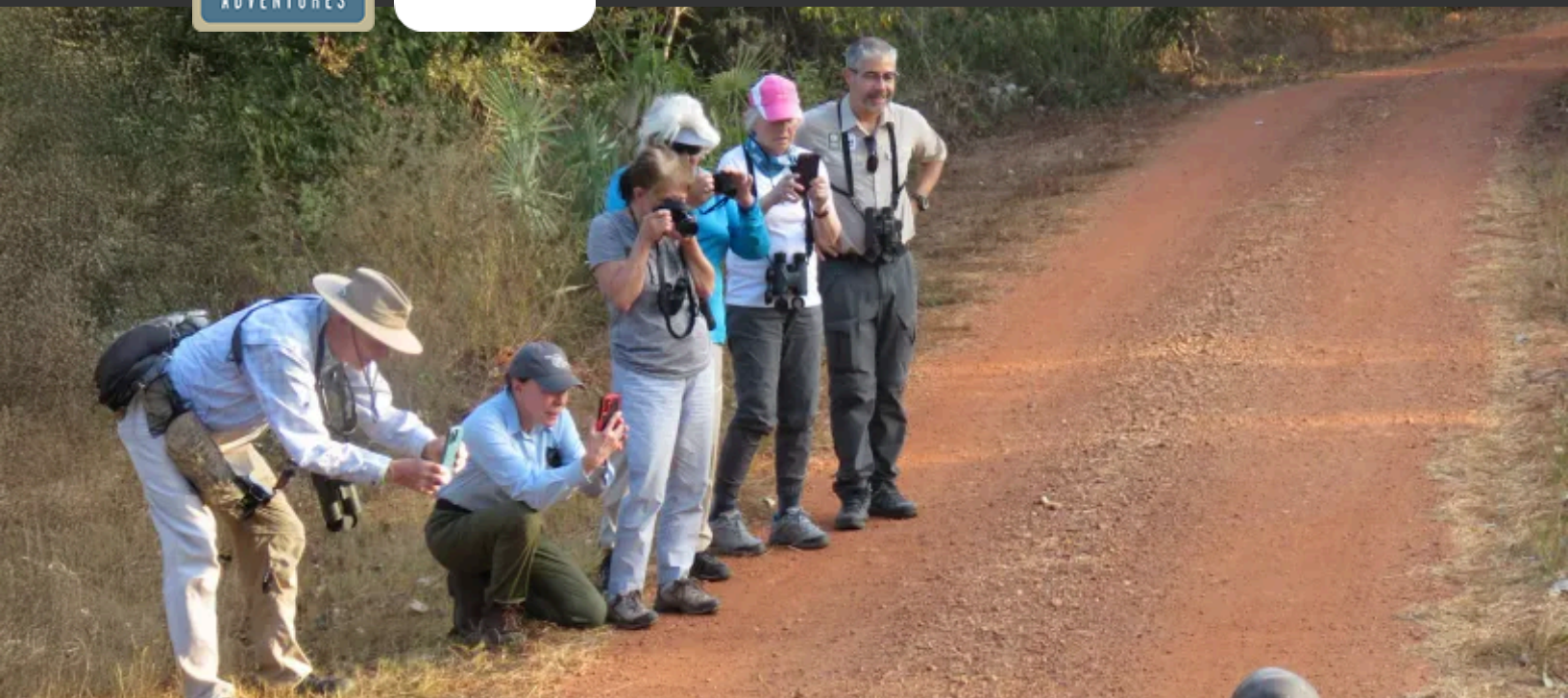
If you plan to arrive on Day 1, you must arrive in Sao Paulo by 4 pm in order to attend a welcome orientation and dinner beginning at 6 pm.

You may depart Sao Paulo at any time on Day 11.

Our Natural Habitat Adventures Travel Desk can best assist with your travel reservations, as our staff is familiar with the specific requirements of this program and can help arrange the most efficient itinerary. Please call us at 800-543-8917. While we offer the best available rates to us on airfare and additional nights' accommodations, you may occasionally find special web rates or lower fares online.



Discovering Our Planet Together

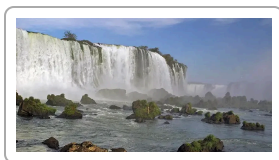


Extension Details:

Iguazu Falls Extension
\$2595

Jaguars & Wildlife of Brazil's Pantanal Extensions

An In-Depth Foray into South America's Grandest Wildlife Realm



Iguazu Falls Extension

A privately guided adventure to experience one of the world's mightiest waterfalls up close, including both the Brazil and Argentina sides of this massive cataract with hundreds of individual cascades.

\$2595 (+air)



Natural Habitat & WWF: Discovering Our Planet Together

Natural Habitat Adventures • PO Box 3065 • Boulder, CO USA 80307

USA & Canada: 800-543-8917 • International: 303-449-3711

© 2026 Natural Habitat Adventures

WWF's membership travel program is operated by Natural Habitat Adventures (Nat Hab). To date, Nat Hab has provided more than \$6 million in support of WWF's mission and will continue to give 1% of gross sales plus \$175,000 annually through 2028. WWF® and ©1986 Panda Symbol are owned by WWF. All rights reserved.