



Discovering Our Planet Together



Iceland & Greenland: A Nordic Discovery

Explore a Less-Traveled Side of Northernmost Europe on a Unique Integrated Itinerary



Discovering Our Planet Together

Table of Contents:

Trip Overview	3
Trip Itinerary	4
Trip Accommodations	12
What Makes Nat Hab Different?	14
Dates & Pricing Information	17
Trip Extensions	21



Discovering Our Planet Together



Trip Details:

Days

14 Days /
Jul-Aug

Price

From
\$19995
(+Air)

Iceland & Greenland: A Nordic Discovery

Explore a Less-Traveled Side of Northernmost Europe on a Unique Integrated Itinerary

Did you know much of Iceland is green and Greenland is icy? Delve into the distinctions on a rare adventure that combines the two, far afield of conventional routes. Start with Iceland's black sand beaches and thundering waterfalls, then head into the highlands, a vast, bold landscape scoured by glaciers, rent by deep canyons, and rarely trod by visitors. Then it's north to Greenland, where the scale and drama of our raw Arctic environs may be even more striking. Keep watch for whales as we travel by helicopter and boat to our private base camp on the virtually unvisited east coast. On Sermilik Fjord, in view of the Greenland ice sheet, massive icebergs in fantastical shapes crowd the frigid waters, which we explore via Zodiac and kayak. Meet local Inuit people and learn about subsistence living in one of the most remote and stunning places on Earth.

Trip Highlights

Climb into Iceland's little-visited interior to witness dramatic landscapes of rhyolite mountains, waterfalls, rocky gorges and simmering geothermal forces

At the foot of glaciers spilling from the Greenland ice sheet, weave among icebergs in mighty Sermilik Fjord, look for whales and scout for seals on ice floes

In one of the wildest spots on Earth, our exclusive Base Camp Greenland features heated tent cabins, warm beds, hot showers and chef-prepared meals



Discovering Our Planet Together



Itinerary At A Glance

Day 1

Keflavik, Iceland / Reykjavik

Day 2

South Shore—Lava Center /
Waterfalls / Dyrholaey Peninsula /
Kirkjubaejarklaustur

Day 3

Fjadrargljufur Canyon / Private
Laki Crater 4x4 Tour

Day 4

Exploring Iceland's Central
Highlands

Day 5

Gjain / Commonwealth Farm /
Hjalparfoss / Reykjavik

Day 6

Lava Tunnel / Seltun Geothermal
Area / Fly to Kulusuk, Greenland /
Tasiilaq

Day 7

Tasiilaq—Valley of Flowers &
Town Tour

Iceland & Greenland: A Nordic Discovery Itinerary

Explore a Less-Traveled Side of Northernmost Europe on a Unique Integrated Itinerary

Day 1: Keflavik, Iceland / Reykjavik

Arrive at Keflavik International Airport where you are met on arrival and transferred to our hotel in Reykjavik, about a 45-minute drive. If you arrive early, you may store your bags at our conveniently located hotel while you explore this compact, walkable city on your own. This evening, join our Expedition Leader for a welcome dinner with an orientation to all the adventures that lie ahead in this geological wonderland.





Discovering Our Planet Together

Itinerary At A Glance

Day 8

Tasiilaq / Private Boat to Nat Hab's Base Camp Greenland

Days 9 - 11

Base Camp Greenland—Exploring Sermilik Fjord by Zodiac, Kayak & on Foot

Day 12

Base Camp Greenland / Helicopter or Boat to Kulusuk / Coastal Walk

Day 13

Private Glacier Walk / Kulusuk Town Tour & Drum Dancing / Keflavik

Day 14

Keflavik / Depart

Day 2: South Shore—Lava Center / Waterfalls / Dyrholaey Peninsula / Kirkjubaejarklaustur

Explore Iceland's south coast today, an area known for its volcanic black sand beaches and countless waterfalls. We are in the region affected by the powerful 2010 eruption of Eyjafjallajökull volcano, an event brought to life at the Lava Center, which features interactive exhibits depicting the colossal natural forces that have created Iceland over tens of millions of years. Our knowledge of Iceland's dynamic geology is enhanced as we learn about the eruptions and lava flows, rift systems, faults and glacial floods that make the island a showcase of volcanism. The center introduces us to the UNESCO Katla Global Geopark plus Iceland's elaborate monitoring system for surveying volcanoes and earthquake zones.

Continuing along the south coast, we visit several thundering waterfalls, including powerful Skogafoss and Kvernufoss. A stop at the Dyrholaey Peninsula, famous for the massive rock arch eroded from the cape, is one of Iceland's best places to view Atlantic puffins, with a large migratory colony found here. Other prolific birdlife include eider ducks, and there are broad views of the South Coast's black sand beaches. Another highlight is Reynisdrangar Rocks, a trio of columnar basalt sea stacks. Legend holds that they were formed after two trolls were out fishing in a three-masted ship. When the trolls did not return to their cave before sunrise, they and their vessel turned into needles of stone, since trolls cannot tolerate daylight. Here, we'll have a chance to walk on the famous black sand beach before continuing to our hotel in Kirkjubaejarklaustur for dinner and to spend the night.

Day 3: Fjadrargljúfur Canyon / Private Laki Crater 4x4 Tour

Our day begins with an early hike at Fjadrargljúfur Canyon, a narrow, serpentine gorge contained by 300-foot-high vertical walls covered in bright green moss. Walking along the rim, we look down into its shadowy depths where the twisting, silver Fjadra River flows. Continuing into the Highlands, an exciting 4x4 adventure unfolds as we follow a rugged mountain track across several rivers to reach the Laki Crater system atop a vast plateau. While this 15-mile line of craters is one of Iceland's most impressive geological features, it's not easy to reach and thus rarely visited. The series of craters, fissures and lava formations emerged when the Skaftareldar volcano erupted in 1783, with catastrophic consequences for the people of Iceland. Tens of thousands of livestock were killed, and more than 10,000 individuals—about 25% of the population at that time—died in the massive eruption. We spend several hours in this dynamic terrain, hiking through the austere landscape, peering into craters from dramatic overlooks, and stopping at two spectacular waterfalls, Skaftarhreppur and Fagrifoss, where Vatnajökull Glacier is visible on a clear day. Return to Kirkjubaejarklaustur for dinner and a second night.



Day 4: Exploring Iceland's Central Highlands

Few visitors to Iceland get beyond the well-trodden routes along the coast, but we devote a full day to exploring a wild tract of its high inner recesses. Traveling into the remote highlands by 4x4, we stop first for a trek to Ofaerufoss waterfall. The only way to see this dramatic two-tiered cascade is on foot, where hikers are rewarded with a view of the 130-foot-high falls as it drops down a stark basalt face covered in thick green moss. The waterfall pours into the Edlgja Chasm, a broad volcanic canyon formed after huge fissure eruptions in the Myrdalsjokull region in the 10th century. The vivid colors of the vegetation on the canyon walls make this landmark even more spectacular.

After a picnic lunch, explore Landmannalaugur, one of Iceland's most distinctive regions in terms of both geology and natural beauty. Accessible only by 4-wheel-drive, this vast region lies next to the jet-black Laugahraun lava field, a massive expanse of dried magma that originally formed in an eruption in 1477. Landmannalaugur itself is made up of windswept rhyolite mountains, a silica-rich rock that appears in a spectrum of colors including shades of red, pink, green, blue and yellow. The region is also known for its natural geothermal baths. With two guides, we are able to divide our group by physical ability level, to offer a suitable hike for all guests. Continue to Sigöldugljúfur, a dramatic canyon also called the Valley of Tears for its sheer number of waterfalls that pour from its walls. Reachable only via primitive 4x4 roads, this rarely visited feature is renowned for its otherworldly feel, a fantasy landscape of rockbound walls, vivid turquoise water and abundant green vegetation. Spend tonight at a hotel near the Highlands.



Discovering Our Planet Together

Day 5: Gjain / Commonwealth Farm / Hjalparfoss / Reykjavik

Beginning our journey back to Reykjavik today, we stop first at Gjain. On the edge of the highlands in the uppermost part of Thorsardalur Valley, this is an exquisite little fairyland where visitors often say they feel the presence of Iceland's mythical elves and trolls. The cave-riddled landscape, covered in lush, lime-green vegetation, is shaped by columnar basalt, delicate volcanic tuff formations, and several small waterfalls that pour into clear pools, feeding the Rauda River coursing through the small canyon. Although Gjain was featured in the popular television series *Game of Thrones*, it remains a largely unknown secret to most Iceland travelers.

Our next stop is Commonwealth Farm at Thjorsardalur, a reconstructed farmstead based on the excavated farmhouse that was buried under volcanic tephra in an eruption in 1104. Use your imagination as we tour the site to picture into what life was like in Iceland in medieval times. Continue to Hjalparfoss, a conjoined pair of waterfalls where the rivers Fossa and Thjorsa meet. The two rivers fall at about a 45-degree angle from each other, and their cascades merge as they tumble into a serene blue pool. The lava field this feature falls from was created in one of the many eruptions of the nearby Hekla volcano. Hekla is one of Iceland's most active, unpredictable and explosive volcanoes, so ferocious that it earned the nickname "Gateway to Hell" after a particularly violent eruption in 1104, when onlookers thought the Earth had opened up and Hell was exposed. Birds seen flying around the crater were believed to be souls swarming around the entrance to the fiery underworld.

Once we return to our hotel in Reykjavik, we'll say farewell to our Iceland Expedition Leader as we meet our Greenland guide team at an orientation and dinner hosted by your new Expedition Leaders for the second portion of your adventure.



Discovering Our Planet Together

Day 6: Lava Tunnel / Seltun Geothermal Area / Fly to Kulusuk, Greenland / Tasiilaq

It's time to head to Greenland today! But more of Iceland's volcanic dynamism is on display before we depart late this afternoon. First, we have a private tour of the Raufarholshellir Lava Tunnel to witness the inner workings of an ancient volcanic eruption that happened 5,200 years ago. Inside the lava tube—one of the longest in Iceland at 4,500 feet—learn the origins of the vibrant colors and intriguing rock formations. Then we head down the Reykjanes Peninsula to explore Seltun, one of Iceland's most important high-temperature geothermal areas. Lying on the fissure zone of the Mid-Atlantic Ridge separating the Eurasian and North American tectonic plates, this seething landscape is pocked with boiling mudpots and hissing fumaroles belching steam. Following the boardwalk through the animated landscape where mineral deposits have created colorful sediments, we smell the pungent odor of sulphur in the air. The Reykjanes Peninsula is one of Iceland's most active volcanic areas, with seven separate eruptions occurring in 2024 alone.

Continue to Keflavik, returning to Iceland's international airport where we board our flight to Kulusuk, Greenland. As we approach, get a preview of the magnificent scenery to come, with icebergs drifting below and perhaps even a chance to spot a whale from the air, if you've got a window seat. From Kulusuk, make a scenic transfer by helicopter or boat to Ammassalik Island, landing in Tasiilaq, the small administrative center of East Greenland. Tasiilaq's collection of charming wooden houses painted in bright primary colors surveys King Oscar's Harbor, surrounded by pointed peaks iced with glaciers. The town of 2,000 is a hub for outdoor adventure, from hiking and kayaking in summer to dog sledding and glacier skiing in winter. Most of East Greenland is uninhabited, however, except for a handful of small subsistence hunting communities. Greenland's east coast is often called "the back side" by those on the west, where most of the population, its capital and institutions are located. East Greenland's people had no contact with the outside world till the beginning of the 20th century, and that isolation has fostered a distinct and resilient culture. Our introduction to Greenland begins here where Arctic wilderness and traditional lifestyles meet. Once we check in to our hotel, we gather for dinner, surveying the 180-degree view of the town below and mountains beyond.



Discovering Our Planet Together

Day 7: Tasiilaq—Valley of Flowers & Town Tour

Though interior Greenland is covered by a massive ice cap, a few habitable areas exist around the bays and coastal islands, and the region we visit enjoys a surprisingly mild and dry summer climate. Set out this morning with our Expedition Leader to explore the area around Tasiilaq on foot, hiking into the Valley of Flowers above the scenic bay that fronts the town. Bring your camera: the ice-clad gneiss and granite peaks provide a striking backdrop for waterfalls and small lakes fringed by northern wildflowers in season. After lunch, we head into town to learn more about the region's history and contemporary daily life here. The small Ammassalik Museum is a highlight, showcasing Greenlandic Inuit culture and traditions. Its collection featuring East Greenlandic masks, kayaks, sleds, tools, beadwork, old and new tupilak figures, and works by local artists. This afternoon, we'll also hear firsthand experiences from a local resident, sharing personal perspectives on daily life and year-round subsistence in this remote Arctic realm.

Day 8: Tasiilaq / Private Boat to Nat Hab's Base Camp Greenland

Depart by boat for Nat Hab's private wilderness Base Camp, located on the east side of Sermilik Fjord. Our destination is near the tiny village of Tinit, which we'll visit during our stay. This hilltop hamlet is one of the most picturesque outposts in East Greenland, surveying a panorama of Sermilik Fjord littered with huge icebergs, with the Greenland ice sheet in view beyond. Behind the town, glacier-clad peaks rise over a mile high, jutting up like sharp black teeth through the ice. Tinit is home to fewer than a hundred hardy people who live a subsistence lifestyle, fishing and hunting amid the constantly shifting ice.

Keep an eye out for whales as we travel, as they are often seen in these waters when ice conditions permit. The area is filled with evidence of ancient habitation, including graves and ruins of old Inuit sod house foundations, and it is an evocative place to learn more about Inuit history and lore. Reaching Base Camp Greenland, we find ourselves in one of the most remote places on the planet. After settling in to our private tent cabins, sit down for coffee or tea in the yurt where we have an orientation to our environs, followed by a gear fitting to prepare for our Arctic adventures ahead. After lunch, our first exploratory venture is likely to include a paddle among the small icebergs and calm waters of our protected bay if weather permits. Then we'll gather for dinner and a lecture to acquaint us with the region's natural history. Through presentations and personal visits during our stay, we also learn about Greenland's cultural heritage and aspects of modern life. Traditional Inuit identity remains dominant in East Greenland, and we share an authentic encounter with this enduring ancient culture that still exists in close harmony with nature.



Discovering Our Planet Together

Days 9 - 11: Base Camp Greenland—Exploring Sermilik Fjord by Zodiac, Kayak & on Foot

The landscape along Greenland's isolated and rarely visited east coast is dramatic. Great fjords indent the coastline, penetrating far into sheer-sided mountains capped by the world's second-largest ice sheet—and Sermilik Fjord is the mightiest of them all. The 60-mile-long "iceberg highway" is primarily fed by the highly active Helheim Glacier, the fastest-flowing tidewater glacier on Greenland's east coast. Our base camp provides a safe and comfortable outpost from which to explore this vast expanse of wild terrain just below the Arctic Circle. Beyond our location at the mouth of a glacial valley, the wider region is dotted with a few isolated villages where Greenlandic Inuit people have thrived for centuries in this uncompromising Arctic environment. In varied encounters, we learn about their culture and how they are retaining their traditions while adapting to contemporary life in the 21st century.

On Zodiac excursions, navigate among a flotilla of blue icebergs in an array of wild shapes, some as big as buildings. While marine life sightings are sporadic, we sometimes see seals and less frequently whales. The latter are found seasonally in these waters, and when ice conditions permit—if we are lucky, we might catch a glimpse of a fin, minke or humpback, all of which are occasionally present. Guided sea kayaking is also an option for an eye-level view on the frigid waters and bobbing ice. Ashore, choose among walks and hikes of varying physical demands as we traverse the mountainsides and wander near glaciers that wind down from the Greenland ice sheet. This huge ice mass—second in size only to Antarctica—stretches more than 1,500 miles from north to south, is nearly 2 miles deep at its thickest point, and covers 80 percent of the island. Learn about the crucial role the ice sheet plays in regulating Earth's climate, and see with your own eyes how rapidly it is being affected by a warming climate.

Long hours of summer daylight allow for extensive exploration. Witness the effect of geological forces on naked bedrock, and walk atop patches of tundra. Amid fields of Arctic cotton grass and miniature berry bushes, look for Arctic fox and birdlife including ptarmigan, northern wheatear, and possibly gyrfalcon. Each evening, we retreat to Base Camp for creative meals freshly prepared by our accomplished chef. After dinner, gather for interpretive presentations by our naturalist Expedition Leaders, who share their extensive knowledge of Greenland's geology, glaciology, ecology and human history. And, though the sun gleams late into the evening just below the Arctic Circle, a good night's sleep is in order to refuel for the next day's adventures. Wrapped in profound silence in our isolated cabins, we're sure to get it. On our late-season departures, we may even have a chance to see the northern lights, if the aurora is active in the darkening night sky.



Day 12: Base Camp Greenland / Helicopter or Boat to Kulusuk / Coastal Walk

Our day begins with a last morning activity from Base Camp, which may be a hike over the tundra in search of wildflowers, or another option, depending on the weather. Then it's time to begin the journey back to more civilized climes, as we first make our way back to Kulusuk by helicopter or boat, depending on conditions. On the return trip, survey jagged peaks and huge U-shaped valleys gouged by glaciers, forever awed by the grandeur of Greenland. On arrival in Kulusuk, we check in to our hotel surrounded by more of East Greenland's imposing mountains—the small town is a well-known gathering point for adventurers and scientists heading out to the ice sheet. This afternoon, we'll make an exploratory walk around Kulusuk before dinner.

Day 13: Private Glacier Walk / Kulusuk Town Tour & Drum Dancing / Keflavik

This morning, we board a boat to head out for a half-day glacier walk excursion. In addition to large chunks of ice calved from glaciers that feed the region's fjords, we may also see tabular icebergs—oceangoing slabs of ice, some of which have been drifting for months, driven down the coast by the strong East Greenland Current. Reaching a small island, we disembark to walk on a glacier, surrounded by spectacular views of fjords and mountain ranges. Atop its rough surface, examine unique formations such as moulins, which are whirlpool-like shafts in the ice. Walking farther, we reach a vantage point for a full view of the glacier's face.

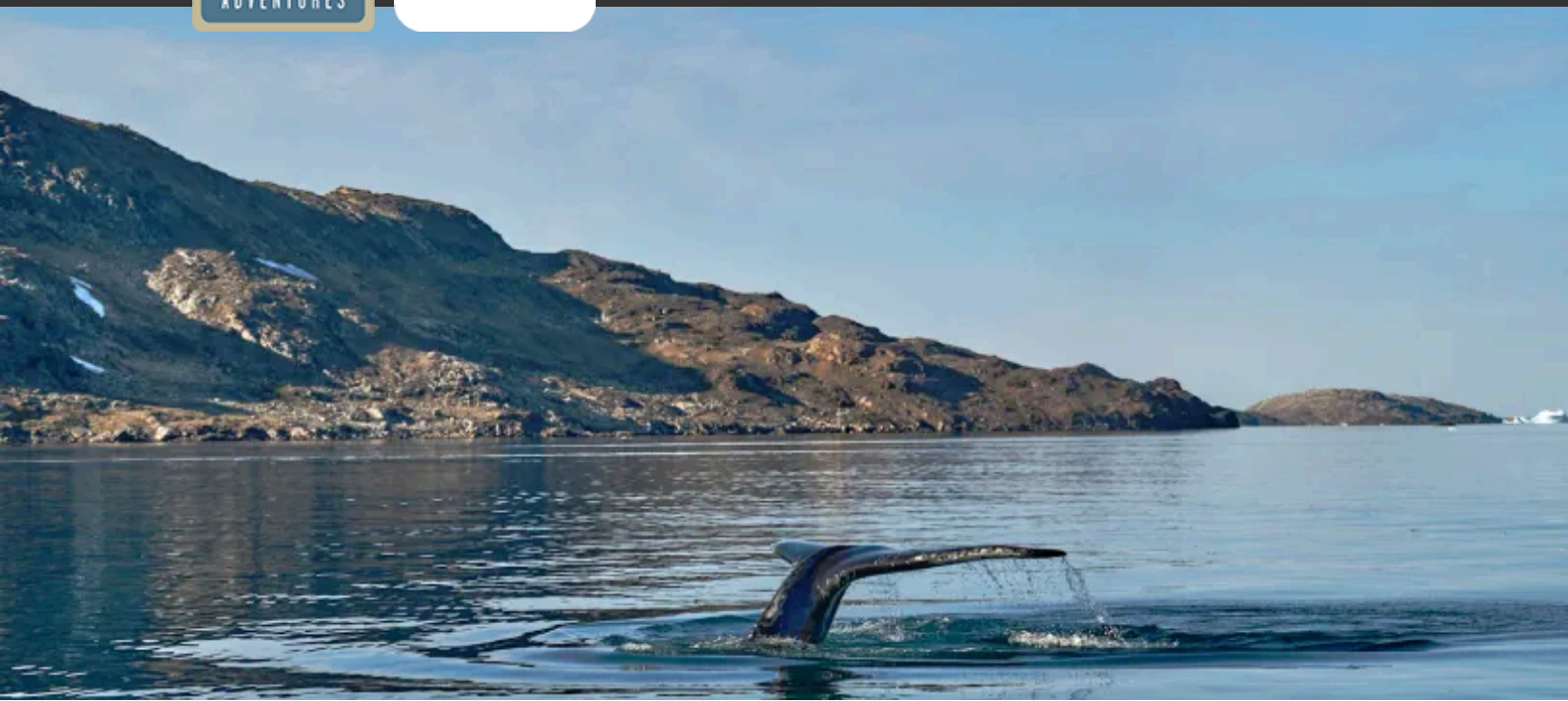
Returning to Kulusuk, it's time to celebrate our extraordinary adventure over a farewell lunch at the hotel. In the afternoon, we'll explore the town and witness a private performance of traditional Greenlandic drumming and dancing, followed by our flight back to Iceland's Keflavik International Airport, arriving late this evening. We spend the night at an airport hotel nearby to facilitate easy connections for tomorrow's onward departures.

Day 14: Keflavik / Depart

A transfer is included from the hotel to Keflavik International Airport to meet departing flights.



Discovering Our Planet Together



Accommodation Details:

Hotel Klaustur

Hotel Highland

Hotel Angmagssalik

Base Camp Greenland

Hotel Kulusuk

Park Inn by Radisson Reykjavik
Keflavik Airport

Hotel Reykjavik Saga

For detailed descriptions, visit
nathab.com/europe/iceland-greenland-nature-adventure/accommodations

Iceland & Greenland: A Nordic Discovery Accommodations

Explore a Less-Traveled Side of Northernmost Europe on a Unique Integrated Itinerary



Hotel Klaustur

Set amid the region's dynamic nature between two of Iceland's most famous glaciers, Vatnajökull and Myrdalsjökull, Hotel Klaustur is a contemporary boutique hotel conveniently located on Iceland's Ring Road.



Hotel Highland

Located at the edge of Iceland's most active and impressive volcanic area, Hotel Highland is the last outpost before entering the rugged and remote highlands, known for dramatic landscapes, glaciers, geothermal activity and expansive lava fields.



Hotel Angmagssalik

Perched high above the seaside village of Tasiilaq in remote East Greenland, 30 simple yet comfortable rooms offer guesthouse-style ambience with stunning views from a spacious contemporary lounge.



Discovering Our Planet Together



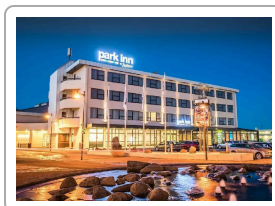
Base Camp Greenland

A singular, exclusive refuge of rustic Arctic luxury surrounded by raw wilderness. Eight heated safari-style tent cabins offer exceptional comfort and amenities for these ultra-remote environs.



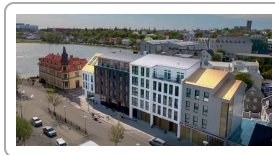
Hotel Kulusuk

The only lodging in this small and traditional Inuit community, Hotel Kulusuk enjoys a scenic perch on Greenland's rocky east coast, with views of Apusiaajik Glacier and Isikajia Mountain.



Park Inn by Radisson Reykjavik Keflavik Airport

Located in Keflavik just ten minutes from the airport, the hotel provides a convenient landing spot for our final night, with easy access for departing flights.



Hotel Reykjavik Saga

This elegant new 4-star hotel in the heart of Reykjavik features sleek contemporary design elements and is just steps from all the city center attractions.



A Rare Combo Itinerary You Won't Find Anywhere Else

For adventure travelers looking to combine a trip to Iceland and Greenland on an itinerary that showcases less-visited destinations, this unique adventure fills that bill. Explore Iceland's dramatic south coast and rarely visited central highlands, then experience the rugged Arctic beauty of East Greenland in complete comfort, surrounded by some of the most remote wilderness on Earth.

1

An Exclusive Itinerary That Gets You Where Others Don't Go

Only Natural Habitat Adventures offers this combination itinerary, featuring some of Iceland's most remote and striking landscapes, then continuing to Greenland's east coast, a virtually unvisited realm of vast fjords, huge icebergs and views of the Greenland ice sheet. While other outfitters offer trips to Greenland, most go to the west side, which is where the bulk of the population lives.

2

A Rare Exploration of Iceland's Central Highlands

With our in-depth expertise, we take you far afield of conventional Iceland routes and deep into the remote highlands to see glaciers, gorges, dozens of rarely seen waterfalls, and more. Traveling via 4x4, we reach striking sights that few get to see.

3

A Seamless Route with Convenient Round-Trip Connections from Reykjavik

Our adventure begins and ends in easy-to-reach Reykjavik (with flights in and out of Keflavik International Airport). All the connections and logistics are taken care of, meaning you can immerse yourself fully in this grand adventure without worrying about complex arrangements.

4

The Only "Luxury" Base Camp in Greenland

Constructed in 2015 and still without competitors, our Arctic expedition camp offers comforts you'd never expect in this exceedingly remote sector of Greenland, including hot showers, private toilets and chef-prepared gourmet meals. From camp, we have access to close-up views of the Greenland ice sheet by Zodiac. Our location near the edge of Sermilik Fjord grants us an eye-level vantage on huge icebergs floating by, and we often see whales and seals in the frigid waters.



Discovering Our Planet Together

5

A Small-Group Wilderness Immersion

Just 13 travelers can be accommodated on this adventure, giving you a sense of solitude in the wilderness and personal attention from our guides. It's a markedly different way to experience Iceland – avoiding tour buses and crowded routes – and Greenland this way, rather than with hundreds of other travelers aboard a big cruise ship, all going ashore together.

6

Scenic Helicopter Flight from Kulusuk to Tasiilaq

To expedite our arrival to Ammassalik Island where our Base Camp Greenland adventure begins, we make a scenic transfer via helicopter from Kulusuk to East Greenland's small administrative capital of Tasiilaq. It's much faster than traveling by boat, and you may even spot whales from the air. Depending on weather and ice conditions, we may also utilize helicopter transfers over the snowcapped coastal mountains to return from Base Camp.

7

An Authentic Encounter with Contemporary Greenlandic Culture

In addition to our time at Base Camp, we spend time in Kulusuk; Tasiilaq, the capital of East Greenland; and the tiny village of Tinit, a 20-minute boat ride from camp. Learn about East Greenland's history and culture on walks, personal visits and a tour of the town museum in Tasiilaq. Most visitors never get to these remote communities, but we are able to meet local Greenlandic Inuit people, appreciate their enduring traditions, and gain insight into the challenges and rewards of modern life in the Arctic.

8

Unmatched Depth of Guiding Experience

Our Iceland guides are second to none, and our company has more East Greenland experience than any other outfitter. Nat Hab colleague Olaf Malver pioneered commercial kayaking trips on Greenland's east coast in the 1980s, including many historic exploratory paddling "firsts," and his deep expertise has placed us in an unparalleled position today. We know a nature adventure is only as good as the guide at the helm, and we provide the very best! **See Expedition Leader bios** and traveler comments regarding the quality of our leaders.

9

The Absolute Best Equipment

As part of our unwavering commitment to safety and comfort, we use the best and most up-to-date expedition Zodiacs and kayaks available, as well as top-of-the-line safety gear. Our equipment is meticulously maintained, reducing the chance for unexpected mishaps. We also provide the highest-quality Mustang expedition suits for our guests' safety and warmth while on the water. When safety counts, only the best will do—and not every outfitter provides it.



Discovering Our Planet Together

10

Our Quality-Value Guarantee Ensures Your Outstanding Greenland Adventure

When you travel with Natural Habitat, you receive our exclusive guarantee, clearly stating that we will meet the lofty expectations we set in our promotional materials. To our knowledge, this is the most ambitious guarantee made by any adventure travel company.

11

Feel Good About Your Carbon-Neutral Journey

We care deeply about our planet, as we know you do. When you travel with us, the carbon emissions from your trip are 100% offset—including your round-trip flights from home. Natural Habitat Adventures has been the world's first carbon-neutral travel company since 2007.

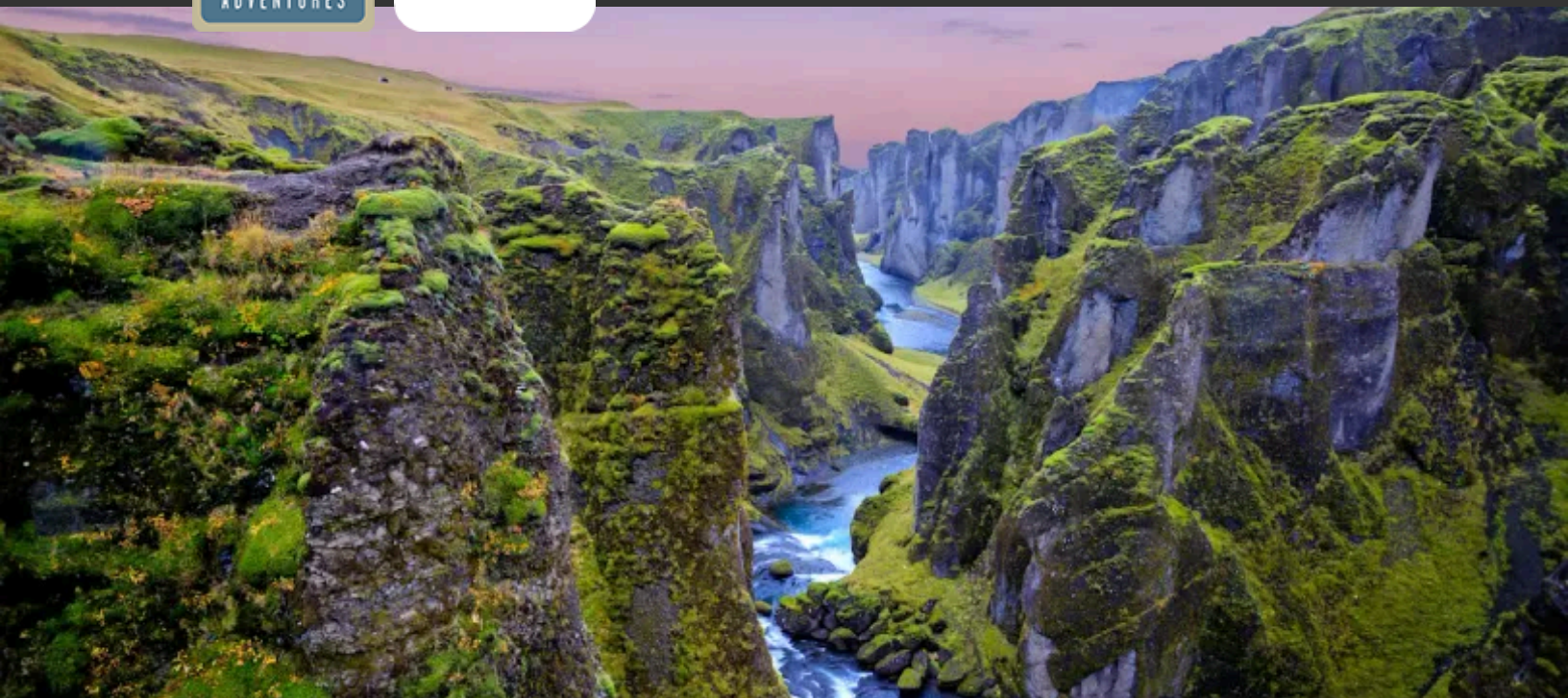
12

Natural Habitat Adventures is WWF's Travel Partner

Because of our commitment to environmentally friendly travel, as well as the exceptional quality of our worldwide adventures, we have been chosen by World Wildlife Fund—the world's leading environmental conservation organization—as its worldwide travel partner, a designation that makes us exceedingly proud.



Discovering Our Planet Together



Dates & Pricing Summary:

Prices:
From \$19995
(+Air)

Group Size:
Limited to 13
Travelers

Iceland & Greenland: A Nordic Discovery Dates, Pricing & Info

Explore a Less-Traveled Side of Northernmost Europe on a Unique Integrated Itinerary

2026 Departures

Departure	Return	Notes
Jul 13, 2026	Jul 26, 2026	\$19995 USD (+internal air)
Jul 24, 2026	Aug 6, 2026	\$20195 USD (+internal air)
Aug 9, 2026	Aug 22, 2026	\$19995 USD (+internal air)

2027 Departures

Departure	Return	Notes
! Prices and dates not confirmed for 2027		
Jul 12, 2027	Jul 25, 2027	\$21995 USD (+internal air)
Jul 23, 2027	Aug 5, 2027	\$21995 USD (+internal air)
Aug 9, 2027	Aug 22, 2027	\$21995 USD (+internal air)
Aug 20, 2027	Sep 2, 2027	\$21995 USD (+internal air)



Discovering Our Planet Together

Pricing

See <https://nathab.com/europe/iceland-greenland-nature-adventure/dates-fees> for the latest pricing details.

Included

- **Trip price includes:** Accommodations, services of Nat Hab's professional Expedition Leaders, local guides and camp staff, all meals from dinner on Day 1 through breakfast on Day 14, select beer and wine at camp, some gratuities, airport transfers for those arriving by air on Day 1 and departing by air from Keflavik on final day, private whale watching tour, gear including Mustang expedition suits for Zodiac excursions and all kayaking equipment, all activities and entrance fees, 4x4 transportation in Iceland, all taxes, permits and service fees.
- **Internal air includes:** Round-trip flights between Reykjavik, Iceland and Kulusuk, Greenland, and a helicopter flight between Kulusuk and Tasiilaq (this will be listed separately on our invoicing).

Not Included

Travel to and from the start and end point of your trip, some alcoholic beverages, some gratuities, passport and visa fees (if any), optional activities, items of a personal nature (phone calls, laundry and internet, etc.), airline baggage fees, airport and departure taxes (if any), required medical evacuation insurance, optional travel protection insurance.



Important Information About This Trip

Our journey to Base Camp Greenland offers the only opportunity to encounter one of the planet's most isolated locations via luxury camping. As we head way off the grid on Greenland's remote east coast, guests must be prepared for all the vagaries that come with travel to such an isolated destination. These include inclement weather, varying ice conditions, and a scarcity of operational support, all of which makes a journey to our exclusive Base Camp Greenland an adventure in the truest sense. At times, flights may be canceled due to poor weather, routes may be closed due to changing ice conditions, and some amenities may become unavailable until a new shipment arrives. But the adventure is part of the excitement, and we will use our 25+ years of Greenland operating experience to make the best of even substantial itinerary changes, should they occur.

Terrain

Terrain in Iceland is on rocky and slippery trails with roots and rocks with some elevation gain and steepness.

Terrain in Greenland is mostly off-trail and more difficult than the terrain you might be accustomed to hiking on. **Click here to see example photos of walks and hikes from our adventure.** We take your safety and risk management seriously. If it is determined by the Expedition Leader(s) that you are physically unfit for certain activities, you will be required to sit out or stay back at camp.

Medical Form

Due to the extremely remote nature of this adventure, all travelers are required to submit a medical form prior to departure. This form will be emailed to you approximately six months before your trip. It must be completed and signed by your primary care physician, confirming that you are medically cleared to participate based on the physical requirements outlined for this itinerary.

Meals

Please understand that the meals at camp, while hearty and tasty, are specially planned and prepared for well in advance. Dietary requirements due to serious medical conditions or strict personal restrictions can be met, with ample notice, but must be adhered to while on the trip. If you have a restricted diet (such as gluten-free, vegan, dairy-free, etc), we recommend bringing some of your preferred snacks along with the appreciation that certain foods are limited in this part of the world, and there might not be many options at the Greenland hotels.

Flight Delays

It is possible that your flight to Greenland or back to Iceland could be delayed or cancelled due to inclement weather. In these cases, we provide alternate activities and accommodations during the trip time frame.

Safety

Your safety is of paramount concern to us. Toward that end, we provide highly competent guides with extensive experience in polar regions, and the very best equipment. Our guides are thoroughly trained in emergency wilderness first-aid techniques, traveling in polar bear terrain, and with maritime survival in polar waters. Ultimately, our guides make decisions with everyone's comfort and safety in mind, while trying to maximize the adventure experience for each individual. We must stress that listening carefully to your guide's instructions and directions is ultimately your responsibility and in your best interest and that of the group.

Specialized Equipment

We provide all group gear such as Mustang survival suits, kayaks and kayaking gear (dry suits, pogies,



booties, PFDs) dry bags and a comprehensive first-aid kit and satellite communication devices for emergency communications. We will supply you with a comprehensive Clothing & Equipment list prior to your departure.

Mandatory Insurance

Since the areas we travel to are remote and wild (that's why we go there!), we require that all guests have, at minimum, medical evacuation insurance for this program. This is for the safety of all guests. We require that your chosen independent insurance plan includes at least \$250,000 in medical evacuation coverage.

To protect your investment and to provide peace of mind while you travel, we also strongly recommend purchasing comprehensive travel insurance. Plans may cover everything from medical treatment to trip cancellations and delays and lost luggage. Please contact our office if you would like more information about the medical evacuation and comprehensive travel insurance policies we offer by calling 800-543-8917.

Getting There & Getting Home

Please arrive in Reykjavik in time for a 5:30 pm briefing and dinner on Day 1. For those arriving by air, upon arrival at Keflavik International Airport you will be met by our representative and transferred to our hotel in Reykjavik, about an hour's drive.

Guests are free to depart Reykjavik anytime on the final day of the trip.

Weather can be extremely unpredictable in this part of the world, and our return flight from Greenland to Iceland can be delayed or canceled due to inclement weather or other unforeseen circumstances. Given this possibility, we strongly recommend adding an extra night in Keflavik (or Reykjavik) to ensure you do not miss your connecting flight home.

We can best serve you if our Natural Habitat Adventures Travel Desk makes your reservations, as we are intimately familiar with the special requirements of this program and can arrange the most efficient travel. Also, in the case you might be delayed in Kulusuk, we would be able to make international flight changes on your behalf. Please call us at 800-543-8917 to have us book your flights, or to learn more. Note that while we offer you the best possible rates available to us on airfare and additional nights' accommodations, you may find special web rates or better fares online.



Discovering Our Planet Together



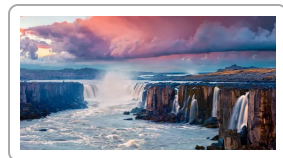
Extension Details:

Iceland: Circling the Land of Fire & Ice
\$15995

Iceland's Wild West
\$12795

Iceland & Greenland: A Nordic Discovery Extensions

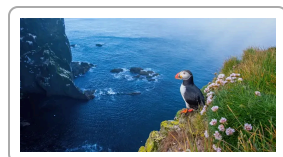
Explore a Less-Traveled Side of Northernmost Europe on a Unique Integrated Itinerary



Iceland: Circling the Land of Fire & Ice

An immersive journey into the rugged grandeur of a land sculpted by intense geological forces. Make a full loop around Iceland on the most comprehensive nature adventure this compact country has to offer.

\$15995 (+air)



Iceland's Wild West

In just over a week, experience highlights and hidden corners of western Iceland -- a microcosm of the country -- including the Snaefellsnes Peninsula and the remote, little-traveled highlands.

\$12795

