



Discovering Our Planet Together



The Great Uganda Gorilla Safari

A Rare Opportunity to Sit with Families of Endangered Mountain Gorillas



Discovering Our Planet Together

Table of Contents:

Trip Overview	3
Trip Itinerary	4
Trip Accommodations	8
What Makes Nat Hab Different?	10
Dates & Pricing Information	12
Trip Extensions	16



Discovering Our Planet Together



Trip Details:

Days

10 Days /
Year-Round

Price

From \$13695
(+Air/permits)

The Great Uganda Gorilla Safari

A Rare Opportunity to Sit with Families of Endangered Mountain Gorillas

You push aside a tangled rope of vines, pressing through the maze of foliage, when at last you see them. Ten or 12 gorillas sit in a forest clearing, two more up in a tree. They stop munching for a moment to observe you, nonchalant. A few feet away, you spy the big silverback. Twice the size of the young females, he sits on massive haunches, stripping leaves from branches. He's close enough to hold your gaze with his liquid brown eyes. Something primal, inexplicable, connects the two of you in that moment. The rest of the world slips away outside this rare encounter. On this riveting wildlife expedition, meet mountain gorillas at close range and observe a host of other primates, too, including chimpanzees—plus a wide assortment of African plains game, predators, hippos, crocodiles, spectacular birdlife and more in Murchison Falls National Park.

Trip Highlights

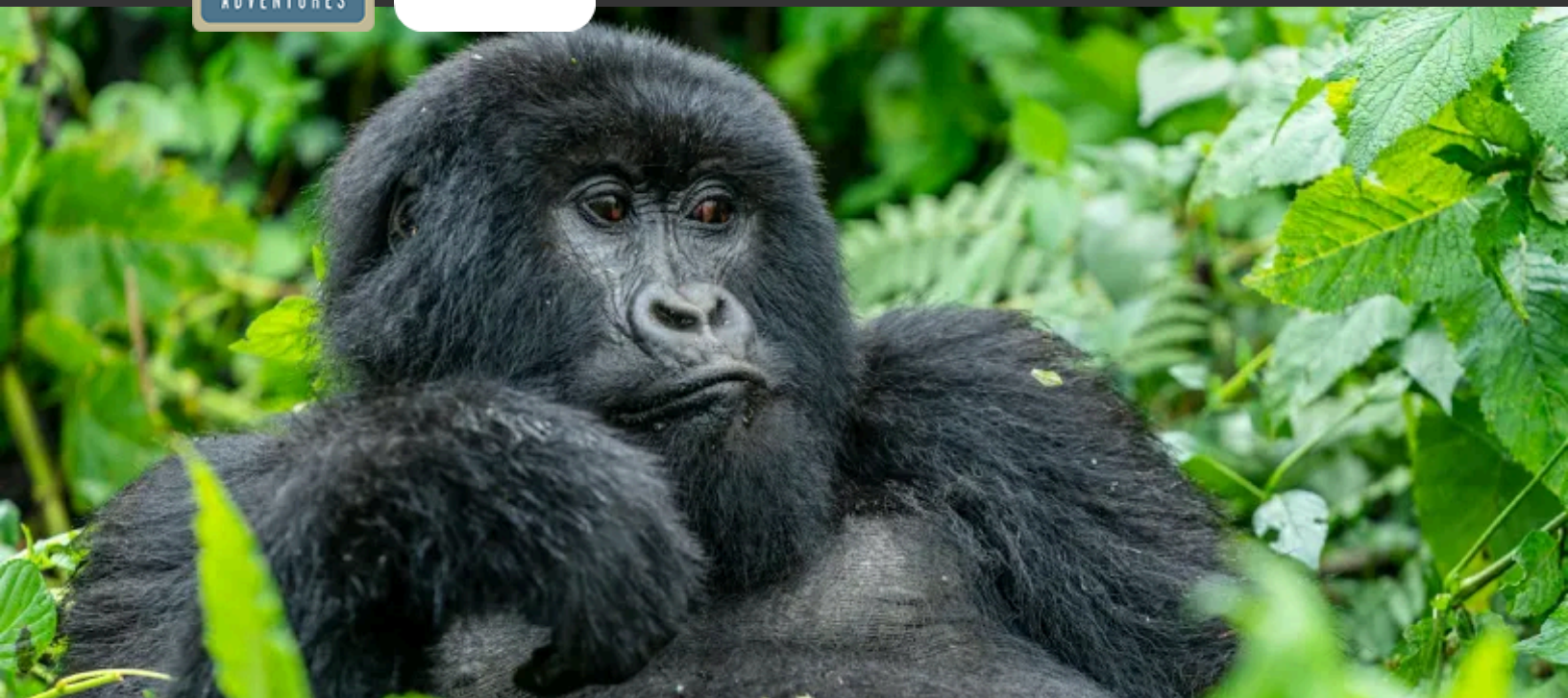
Two separate treks through the rainforest of Uganda's Bwindi Impenetrable National Park offer captivating close encounters with endangered mountain gorillas

Trek in search of chimpanzees in Kibale National Park and Budongo Forest, and look for abundant plains game, predators and birdlife in Murchison Falls National Park

Outstanding Expedition Leaders, the finest ecolodges close to wildlife, plus two chartered flights (avoiding long drives) set this Uganda primate safari above the rest!



Discovering Our Planet Together



Itinerary At A Glance

Day 1

Entebbe, Uganda

Day 2

Murchison Falls National Park—
Private Bush Camp

Day 3

Murchison Falls National Park—
Private Delta Cruise & Game Drive

Day 4

Chimp Trekking in Budongo
Forest Reserve / Private Nile
Cruise

Days 5 & 6

Murchison Falls Game Drive /
Kibale National Park—
Chimpanzee Trekking

Day 7

Bwindi Impenetrable National
Park

Days 8 & 9

Gorilla Trekking in Bwindi

The Great Uganda Gorilla Safari Itinerary

A Rare Opportunity to Sit with Families of Endangered Mountain Gorillas

Day 1: Entebbe, Uganda

Arrive in Entebbe and transfer to our hotel. If time permits, you may wish to visit the famous Entebbe Botanical Gardens nearby. Established in 1902, the gardens contain a diverse plant collection from tropical, subtropical and temperate zones. Also home to a wide variety of birds, the gardens offer an excellent introduction to Uganda's avian species. Vervet and black-and-white colobus monkeys are commonly spotted here as well. Meet your Expedition Leader at a welcome dinner this evening, where we'll have a full orientation to our gorilla tour.





Discovering Our Planet Together

Itinerary At A Glance

Day 10

Entebbe / Depart

Day 2: Murchison Falls National Park—Private Bush Camp

Today we make a scenic drive to our destination of Murchison Falls National Park, covering almost 1,500 square miles of wild and varied terrain at the northern end of the Albertine Rift Valley. Diverse habitats—including savanna, acacia forest, Borassus palm forest, riverine woodlands and papyrus swamp—support a wide variety of wildlife. The park is bisected by the Victoria Nile, a turbulent stretch of whitewater forced through a narrow gap to plunge 140 feet over a sheer wall, creating a thunderous roar. While Murchison Falls is the most powerful waterfall in the world, the calm stretch of river below offers superb wildlife viewing, with elephant, giraffe, buffalo, hippo and Nile crocodile frequently in view. Launch trips to the base of the falls and Lake Albert Delta offer fine birdwatching, with a chance to see rare shoebill storks—a coveted sighting that draws birders to Uganda for this reason alone. The 1951 film *The African Queen*, starring Humphrey Bogart and Katharine Hepburn, was filmed on Lake Albert and the Nile within the park. Other notable figures who have visited here include Theodore Roosevelt, Winston Churchill and Ernest Hemingway.

We spend the next three nights in peaceful seclusion at Nat Hab's private Murchison Bush Camp in the heart of this wildlife mecca. With just eight tents, the low-impact camp is set seasonally in a remote area with unsurpassed proximity for wildlife viewing—our location permits us to be first into the park each morning, far sooner than guests staying at outlying lodges. Enjoy total solitude and the safari ambience of a bygone era, with canvas tents and lantern-lit dining.

Day 3: Murchison Falls National Park—Private Delta Cruise & Game Drive

Murchison Falls National Park is Uganda's richest wildlife enclave, with 144 mammal species including chimpanzees and Rothschild's giraffe, Uganda's largest population of Nile crocodiles among its 51 reptile species, and 550 bird species including shoebills, dwarf kingfisher, Goliath heron, great blue turaco and winged gray warbler. We scout for a wide variety of animals today, first on a private cruise in the Lake Albert Delta, where the Victoria Nile enters this swampy wetland as a sluggish stream, threading its way among small islands in a series of tributaries. The alluvial marsh is a designated Important Bird Area and one of the best birding locations in Africa, especially for aquatic birds—keep an eye out for African fish eagles among the 75+ species of waterbirds found here. In the distance, the Congo mountain ranges rise in undulating forested ridges on the horizon. After our cruise, we're met by our safari vehicles for an afternoon game drive. We look for a great plethora of animals that could include buffalo, elephant, giraffe, Uganda kob, Jackson's hartebeest, oribi, lion, leopard and side-striped jackal.



Discovering Our Planet Together

Day 4: Chimp Trekking in Budongo Forest Reserve / Private Nile Cruise

This morning we set off to go chimpanzee trekking in Budongo Forest Reserve. Located on the escarpment east of Lake Albert, this semi-deciduous tropical rainforest is noted for its large chimp population of approximately 600 individuals, and its native mahogany trees, with some old-growth specimens as tall as 200 feet still standing. The forest is also home to 360 bird species, some of which are endemic to this localized region, including the yellow-footed flycatcher. Research on Budongo's chimpanzees began in the early 1960s, with the establishment of a forest reserve that later became the Budongo Conservation Field Station. Among a trio of pioneer researchers in the 1960s was Jane Goodall. This afternoon, we take another private boat cruise in search of wildlife along the river channels. In addition to the excitement of seeing scores of hippos and crocodiles, we also have good chances to spot elephants, giraffe, baboons, warthogs, and of course, countless beautiful birds. Our journey includes a voyage to the base of Murchison Falls, with a view into the Devil's Cauldron, the foaming chaos created by the turbulent Nile River as it plummets over the cliff. We also pass the spot where Hemingway's plane crashed when the celebrated author visited Uganda in 1954.

Days 5 & 6: Murchison Falls Game Drive / Kibale National Park—Chimpanzee Trekking

After a last morning game drive in Murchison Falls National Park, transfer to the airstrip for a scenic flight over Uganda's verdant highlands to reach Kibale National Park. This equatorial rainforest reserve is home to one of the world's most important primate populations, including 1,300 chimpanzees. We go in search of them on a trek with local trackers who help us spot chimps and monkeys, with plenty of unhurried time to observe their entertaining antics. We may also see up to a hundred different bird species on a wetland sanctuary walk. An optional hike to one of the crater lakes near our lodge offers magnificent views from the rim. After a full and exhilarating day, settle into our thatched cottages at Ndali Lodge overlooking the ancient crater.

Day 7: Bwindi Impenetrable National Park

Depart for the local airstrip this morning for our flight to Kihikihi, gateway to Bwindi Impenetrable National Park and our gorilla-trekking base in the rainforest. The park, whose name references the dense, tangled forests it encompasses, is home to roughly half the world's remaining mountain gorillas. Though best known for its outstanding gorilla viewing, it also provides refuge to chimpanzees, monkeys, elephants and various small antelope. Bwindi is also a top Uganda birding destination, with 23 of Uganda's 24 Albertine Rift endemics, including threatened species such as African green broadbill and Shelley's crimson wing.



Discovering Our Planet Together

Days 8 & 9: Gorilla Trekking in Bwindi

Within the World Heritage Site that is Bwindi Impenetrable Forest, discover one of nature travel's peak experiences: a visit with wild gorillas in their natural habitat. Just over a thousand mountain gorillas remain in the world, and Bwindi is home to about 460—a population that is growing but still threatened by increasing human population and habitat loss in the surrounding area. Our safari includes two treks to spend time among the gorillas, often at very close range. Early in the morning, we head into the dense rainforest on a quest to locate one of the habituated family groups. Our local guides are expert trackers, reading signs of the gorillas' recent presence in the undergrowth. We can't predict how long it will take to locate them, but finally, we hear and see a gorilla family, watching enrapt as they sit among the trees, chewing leaves, babies clinging to mothers' backs, juveniles swinging from branches, and a big male silverback surveying it all. It's hard to tell who is more intrigued with the other, the gorillas or us! If time permits, we'll visit Conservation Coffee, a local co-op of farmers who grow, process and roast beans to sell at a premium to benefit gorilla conservation. We may have a chance to walk through the coffee fields, pick some beans, and see firsthand how this sustainable community enterprise unfolds.

Day 10: Entebbe / Depart

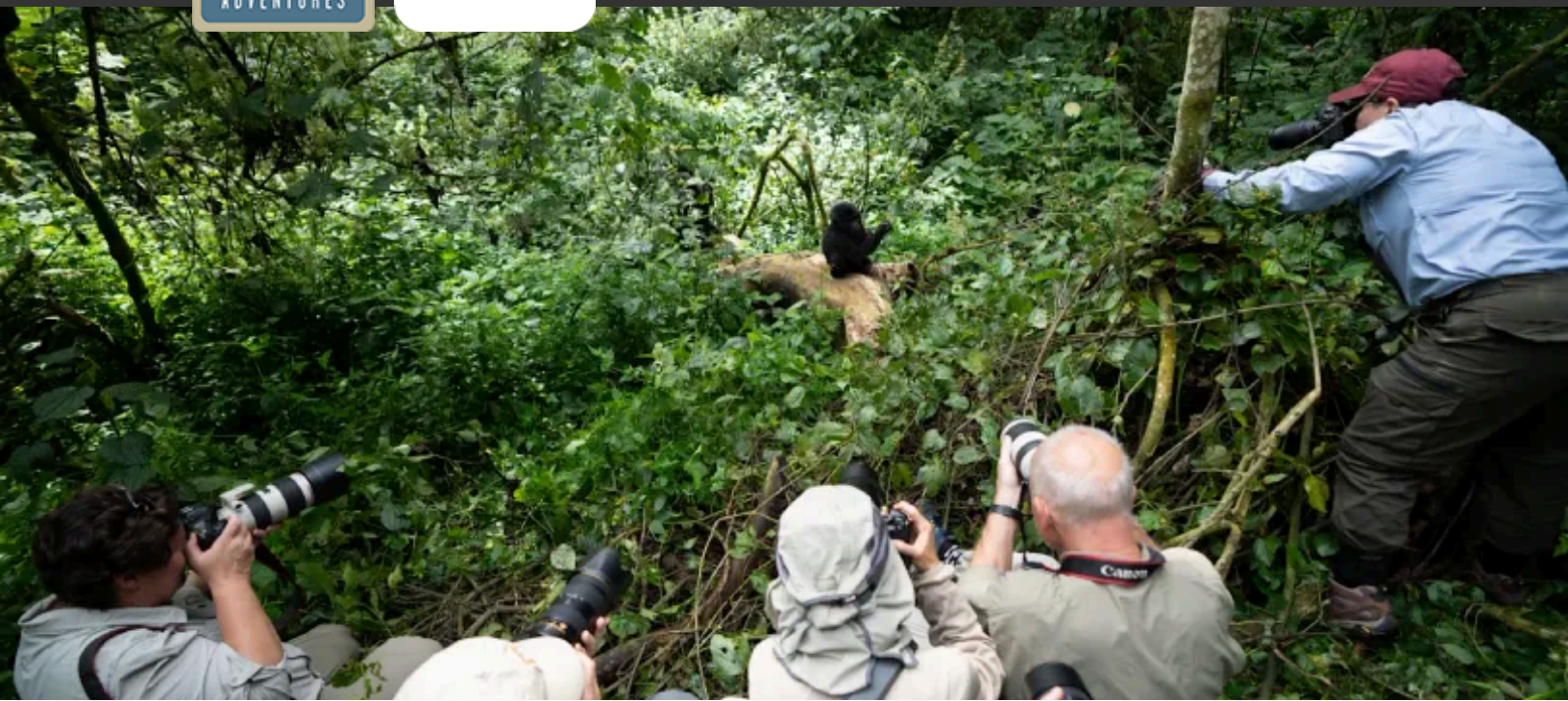
Our Uganda safari comes to a close today with a flight back to Entebbe. A day room is provided on arrival so you can relax and refresh before your departure. We share a farewell meal before transferring to the airport to meet departing flights.

Add Rwanda Gorilla Trekking

We also offer a 13-day Ultimate Gorilla Photo Safari that includes four full days of gorilla photography, with two treks in Uganda and two in Rwanda. Or you may add a custom Rwanda gorilla-trekking extension to this Uganda safari. Please call us for details.



Discovering Our Planet Together



Accommodation Details:

Hotel No. 5

Murchison Bush Camp

Ndali Lodge

Buhoma Lodge

For detailed descriptions, visit nathab.com/africa/the-great-african-primate-expedition/accommodations

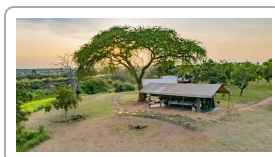
The Great Uganda Gorilla Safari Accommodations

A Rare Opportunity to Sit with Families of Endangered Mountain Gorillas



Hotel No. 5

This stylish boutique hotel tucked within Entebbe's leafy suburbs features luxurious accommodations surrounding a lush lawn, palm-studded gardens and shaded swimming pool.



Murchison Bush Camp

This exclusive mobile camp is private for Nat Hab guests, placed optimally for wildlife viewing and first entrance to Murchison Falls National Park, before visitors from outlying lodges arrive.



Ndali Lodge

Dramatically perched on the rim of an extinct volcano that has filled with water to become scenic Lake Nyinambaga, this thatched lodge enjoys panoramic views over the Rwenzori Mountains.



Discovering Our Planet Together



Buhoma Lodge

This inspiring ecolodge, with eight spacious chalets overlooking a rainforest panorama, provides an ideal location for gorilla treks into Bwindi Impenetrable National Park, which begin from the premises.



Choose Nat Hab for the Most In-Depth Encounter with Uganda's Wildlife

A trek to see Uganda's mountain gorillas offers wildlife lovers a rare, transformative travel experience. While tracking gorillas is our main focus, Uganda offers much more, and this comprehensive safari highlights a variety of wildlife encounters, including chimpanzees and colobus monkeys, plus classic big game and some of Africa's best birding in three national parks. Read more about why our Uganda safari is your most rewarding option:

1

See Uganda's Primates—and So Much More!

While most safari-goers come to Uganda to see endangered mountain gorillas, many may not realize that Uganda is a microcosm of East Africa—this small country is home not just to rainforest primates but a host of classic African safari animals. Our comprehensive and diverse itinerary is designed to take it *all* in.

2

Internal Flights for Extra Time & Comfort

Many safari companies drive both ways between Entebbe and western Uganda by mini bus or safari truck, an arduous journey over bumpy dirt roads in sub-par vehicles. We, on the other hand, provide a level of comfort rarely offered by other operators. Our round-trip chartered flights allow us extra time on safari rather than spending time in transit over rough roads—and generous baggage limits allow ample weight and space for camera gear.

3

Boutique Lodges Offer Secluded Respite & Maximum Wildlife Viewing

While most visitors to Uganda stay in large hotels in the national parks, sharing the experience with hundreds of others in pop-top mini vans, we choose distinctive accommodations away from crowds. Of course, location is critical, and each of our accommodations has been chosen above all for its outstanding proximity to wildlife. Stay at a luxury boutique lodge atop the rim of a volcanic crater lake, an intimate tented camp in Murchison Falls National Park, and secluded forest chalets on the edge of Bwindi.

4

A Window Seat For Each Traveler

Uganda is a visually spectacular country, with terrain ranging from lush, rolling tea plantations and steeply terraced farmland to the snowy summits of the Rwenzoris and open savannas of the east. Against this backdrop, wildlife drives reveal elephants, lions, plains game, colorful birdlife (Uganda is a birder's paradise) and more—not to mention Uganda's beautiful people. You will definitely appreciate your guaranteed window seat!



Discovering Our Planet Together

5

The World's Finest Safari Guides

Natural Habitat Adventures is well known for employing the finest naturalist guides on the planet! In Uganda, rather than using a mix of local guides at each lodge or camp, or inexperienced driver-guides to escort our trips, NHA flies in our own Safari Expedition Leaders to accompany guests from start to finish, ensuring quality and safety throughout. Our Africa Expedition Leaders average 15 years' experience, with additional training from WWF scientists. Please consult our **guide section** for bios and traveler comments about our Expedition Leaders.

6

Our Quality-Value Guarantee Ensures Your Superior Safari Experience

Natural Habitat Adventures offers an exclusive guarantee, which clearly states that we will meet the lofty expectations we set forth in our promotional materials. To our knowledge, this is the most ambitious guarantee made by any adventure travel company.

7

Feel Good About Your Carbon-Neutral Journey

We care deeply about our planet, as we know you do. When you travel with us, the carbon emissions from your trip are 100% offset—including your round-trip flights from home. Natural Habitat Adventures has been the world's first carbon-neutral travel company since 2007.

8

Natural Habitat Adventures is WWF's Travel Partner

Because of our commitment to environmentally friendly travel, as well as the exceptional quality of our adventures, World Wildlife Fund—the world's leading environmental conservation organization—has named Natural Habitat Adventures as its worldwide travel partner, a designation that makes us exceedingly proud!



Discovering Our Planet Together



Dates & Pricing Summary:

Prices:
From \$13695
(+Air/permits)

Group Size:
Limited to 12
Travelers

The Great Uganda Gorilla Safari Dates, Pricing & Info

A Rare Opportunity to Sit with Families of Endangered Mountain Gorillas

2025 Departures

Departure	Return	Notes
Oct 23, 2025	Nov 1, 2025	\$13695 USD (+internal air/park fee)
Nov 10, 2025	Nov 19, 2025	\$13695 USD (+internal air/park fee)

2026 Departures


Departure	Return	Notes
Jan 31, 2026	Feb 9, 2026	\$14795 USD (+internal air/park fee)
Feb 16, 2026	Feb 25, 2026	\$14795 USD (+internal air/park fee)
May 22, 2026	May 31, 2026	\$14495 USD (+internal air/park fee)
Jun 25, 2026	Jul 4, 2026	\$14795 USD (+internal air/park fee)
Jul 6, 2026	Jul 15, 2026	\$14795 USD (+internal air/park fee)
Aug 25, 2026	Sep 3, 2026	\$14795 USD (+internal air/park fee)
Oct 22, 2026	Oct 31, 2026	\$14495 USD (+internal air/park fee)

2027 Departures



Discovering Our Planet Together

Departure	Return	Notes
-----------	--------	-------

 Prices and dates not confirmed for 2027

Jan 31, 2027	Feb 9, 2027	\$14495 USD (+internal air/park fee)
Feb 16, 2027	Feb 25, 2027	\$14495 USD (+internal air/park fee)
May 22, 2027	May 31, 2027	\$14495 USD (+internal air/park fee)
Jun 25, 2027	Jul 4, 2027	\$14495 USD (+internal air/park fee)
Jul 7, 2027	Jul 16, 2027	\$14495 USD (+internal air/park fee)
Aug 25, 2027	Sep 3, 2027	\$14495 USD (+internal air/park fee)
Oct 22, 2027	Oct 31, 2027	\$14495 USD (+internal air/park fee)



Discovering Our Planet Together

Pricing

See <https://nathab.com/africa/the-great-african-primate-expedition/dates-fees> for the latest pricing details.

Included

- **Trip price includes:** Accommodations, services of Nat Hab's professional Expedition Leader(s), local guides, camp staff, gorilla trackers and porter, all meals from dinner on Day 1 through lunch on final day, some gratuities, airport transfers on Day 1 and final day, all activities and entrances fees, all taxes and service fees.
- **Internal air cost includes:** All flights within the itinerary (this will be listed separately on our invoicing).
- **Permit fee includes:** Two mountain gorilla and two chimpanzee treks.

Not Included

Travel to and from the start and end point of your trip, alcoholic beverages, some gratuities, passport and visa fees (if any), optional activities, items of a personal nature (phone calls, laundry and internet, etc.), airline baggage fees, airport and departure taxes (if any), required medical evacuation insurance, optional travel protection insurance.

Important Information About This Trip

Perhaps the two biggest benefits of choosing NHA for your primate safari are our professional Expedition Leaders and our well-engineered and thoughtful itinerary - both provide for an extraordinary journey through the highlights of Uganda without backtracking. Our leader understands our guests' needs and makes special arrangements to capitalize on impromptu opportunities along the way. This trip is designed for those seeking exposure to all the diversity of Uganda's ecosystems. Each aspect reveals more of Uganda: from the chimps of Kibale, to the lush crater highlands, to the wildlife-rich savannahs of Queen Elizabeth National Park, to the impenetrable forest habitat of the mountain gorillas of Bwindi. NHA has been visiting gorillas in Africa since 1989, and this itinerary includes two treks. We ask our guests to understand that the accommodations in this region are not, collectively, of the standard that may be found in other, more established safari countries. Some lodgings are extremely luxurious while others are plain but clean and comfortable.

Mandatory Insurance

Since the areas we travel to on this trip are remote and wild (that's why we go there!), we require medical evacuation insurance for our guests' safety. If you decline the medical evacuation insurance coverage offered by Natural Habitat, we request that you send us documentation of the independent coverage you have selected. We will add the cost of a medical evacuation policy to your tour invoice until you provide our office with proof of coverage including your insurance company's name, contact number and your individual policy number. Thank you for understanding that our policy exists exclusively in the interest of our guests' safety.



Discovering Our Planet Together

Getting There & Getting Home

We ask that you arrive in Entebbe, Uganda by 5 pm on Day 1 in order to attend a 7 pm welcome dinner. For those who would like to arrive in Entebbe in time to visit the botanical gardens (plan to arrive Entebbe by 1 pm), please inform your Adventure Specialist if you would like to participate in a guided group excursion to the gardens at 3 pm on the afternoon of Day 1. We encourage travelers to arrive a day or more early to rest from their plane trip. You are free to depart Entebbe after 4 pm on the final day.

We can best serve you if our Natural Habitat Adventures Travel Desk makes your reservations, as we are intimately familiar with the special requirements of this program and can arrange the most efficient travel. Please call us at 800-543-8917. Note that while we offer you the best possible rates available to us on airfare and additional nights' accommodations, you may find special web rates or better fares online.



Discovering Our Planet Together



Extension Details:

Madagascar Explorer
\$11995

Secluded Botswana Safari
\$17795

The Great Kenya Migration Safari
\$11995

Tanzania's Great Migration & Ngorongoro Crater
\$14995

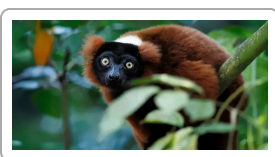
Rwanda Mountain Gorilla Extension
\$4995

Zanzibar Extension
\$1395

Maasai Mara Extension
\$5595

The Great Uganda Gorilla Safari Extensions

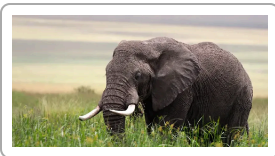
A Rare Opportunity to Sit with Families of Endangered Mountain Gorillas



Madagascar Explorer

Look for rare and endemic flora and fauna on a compact itinerary revealing a mix of contrasting ecosystems—primary rainforest, pristine beaches, ancient baobabs and coastal mangroves

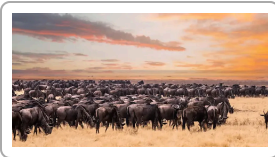
\$11995 (+air)



Secluded Botswana Safari

Our flagship Botswana safari—for just seven guests! A truly exclusive wilderness immersion in the Okavango Delta's best private wildlife reserves and beyond, plus Victoria Falls.

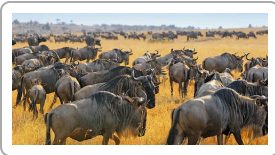
\$17795 (+air)



The Great Kenya Migration Safari

Experience one of the world's most incredible wildlife events in Africa's most classic safari destination—Kenya, home to the massive movement of creatures that is the Great Migration!

\$11995 (+air)



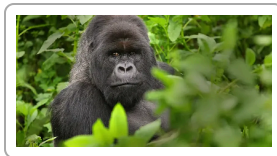
Tanzania's Great Migration & Ngorongoro Crater



Discovering Our Planet Together

Witness one of nature's most exhilarating spectacles: thousands of wildebeest and zebra making their annual trek across the Serengeti! Itineraries custom-designed to follow the herds.

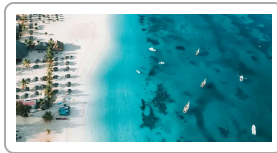
\$14995 (+air)



Rwanda Mountain Gorilla Extension

Track endangered mountain gorillas, hike through the rainforest with expert guides and spend rare moments with a habituated family troop.

\$4995 (+permits)



Zanzibar Extension

Discover a serene oasis with white sand beaches and clear waters in this Indian Ocean archipelago celebrated for natural beauty, history and culture.

\$1395 (+air)



Maasai Mara Extension

Experience wild Africa in Kenya's Maasai Mara, a vast mosaic of savannas and acacia-dotted plains on an exclusive Big Five safari from private mobile camps far from crowds.

\$5595



Natural Habitat & WWF: Discovering Our Planet Together

Natural Habitat Adventures • PO Box 3065 • Boulder, CO USA 80307

USA & Canada: 800-543-8917 • International: 303-449-3711

© 2025 Natural Habitat Adventures

WWF's membership travel program is operated by Natural Habitat Adventures (Nat Hab). To date, Nat Hab has provided more than \$6 million in support of WWF's mission and will continue to give 1% of gross sales plus \$175,000 annually through 2028. WWF® and ©1986 Panda Symbol are owned by WWF. All rights reserved.