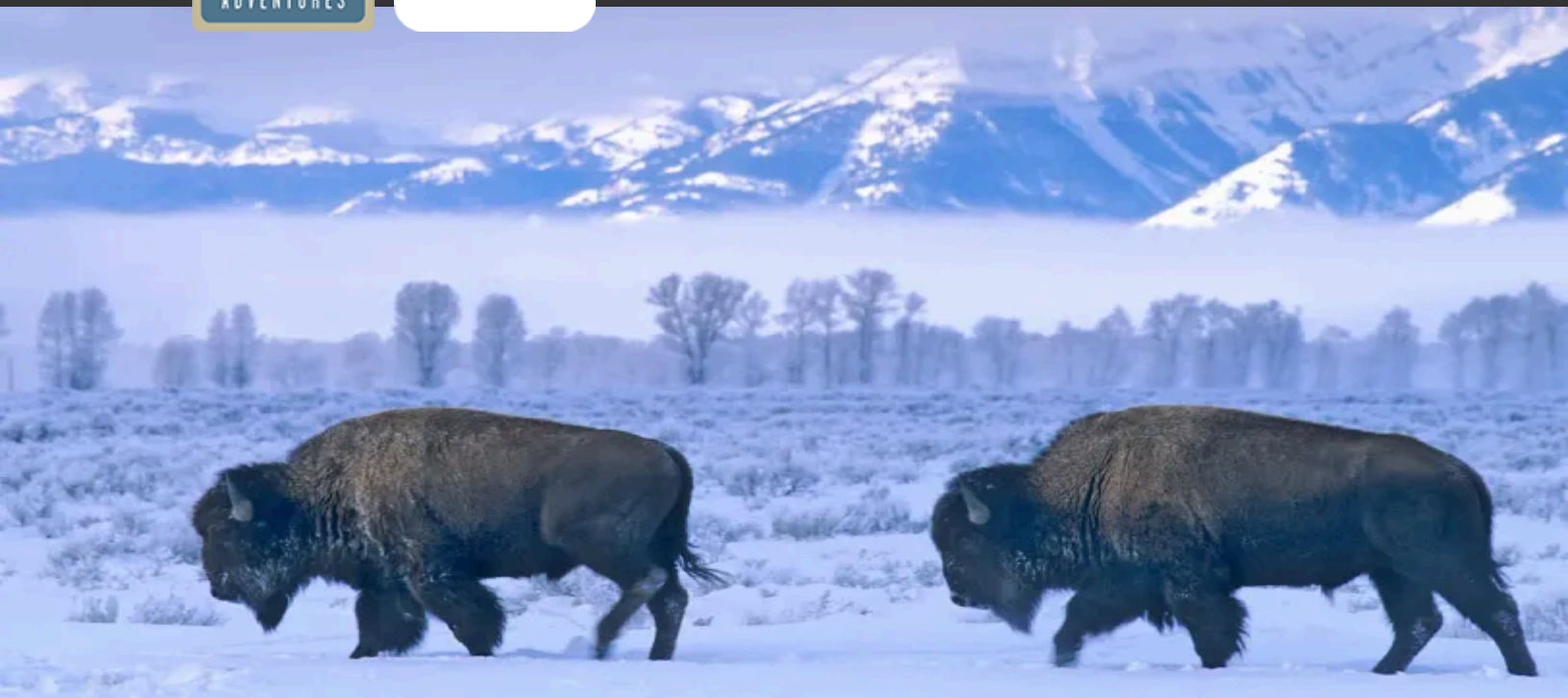




Discovering Our Planet Together



Yellowstone: Ultimate Wolf & Wildlife Safari

A Rare Winter Wildlife Expedition Deep into Yellowstone & Grand Teton National Parks



Discovering Our Planet Together

Table of Contents:

Trip Overview	3
Trip Itinerary	4
Trip Accommodations	7
What Makes Nat Hab Different?	9
Dates & Pricing Information	12



Discovering Our Planet Together



Trip Details:

Days
7 Days /
Jan-Feb

Price
From \$7995

Yellowstone: Ultimate Wolf & Wildlife Safari

A Rare Winter Wildlife Expedition Deep into Yellowstone & Grand Teton National Parks

In the pale light of sunrise, we survey the open expanse of Yellowstone's Lamar Valley, searching for wolves. Alongside expert naturalist guides, with spotting scopes poised, we hope to spy a pack emerge from the forest, energized by the awakening day. In the distance, a large male halts and sniffs the frozen air. Elegant predators, wolves are an important part of the Yellowstone ecosystem, where great herds of elk, snow-cruised bison and other prey provide sustenance. Winter's white mantle offers a pristine backdrop against which to search for these elusive icons of wilderness. The landscape holds magic, too, with steaming geysers, bubbling mud pots and trees covered in glittering ice crystals beneath an immaculate blue sky. Discover Yellowstone and the Tetons on a rare winter wildlife safari—your spirit will never be the same.

Trip Highlights

Alongside our naturalist Expedition Leaders and scientist researchers, search for wolves in Yellowstone's remote Northern Range—the best place on Earth to find them

Make the winter journey to Old Faithful in a private snowcoach, stay inside the peaceful park, and watch steaming geysers erupt against the snowy backdrop

Travel by sleigh over the silent, snowy expanse of the National Elk Refuge in Jackson Hole for close-up views of the vast winter herds beneath the Teton spires



Discovering Our Planet Together



Itinerary At A Glance

Day 1

Jackson, Wyoming

Day 2

Jackson Hole—National Elk Refuge

Day 3

Grand Teton National Park /
Yellowstone National Park—
Snowcoach Tour to Old Faithful

Day 4

Hayden Valley / Mammoth Hot
Springs / Northern Range Wolf
Tracking

Day 5

Northern Range & Lamar Valley
Wolf Safari / Cooke City—Private
Gallery Visit

Day 6

Lamar Valley Wolf Tracking /
Paradise Valley / Bozeman

Day 7

Bozeman / Depart

Yellowstone: Ultimate Wolf & Wildlife Safari Itinerary

A Rare Winter Wildlife Expedition Deep into Yellowstone & Grand Teton National Parks

Day 1: Jackson, Wyoming

Our Yellowstone wildlife tour begins in the Old West town of Jackson, which sits at the edge of Grand Teton National Park in the shadow of the mountain range's jagged spires. This evening, meet your Expedition Leader and fellow adventurers at an informal welcome dinner and orientation.





Discovering Our Planet Together

Day 2: Jackson Hole—National Elk Refuge

Our winter safari begins in the broad valley of Jackson Hole as we look for bald and golden eagles, bighorn sheep, coyote, bison, mule deer, moose and elk. After lunch at the National Museum of Wildlife Art in Jackson, travel by horse-drawn sleigh through the National Elk Refuge. Gliding over the snow that blankets the valley floor, we capture close-up photos of the massive herd that winters here, with thousands of animals roaming the range.

Day 3: Grand Teton National Park / Yellowstone National Park—Snowcoach Tour to Old Faithful

A traverse of Grand Teton National Park offers a panorama of the iconic peaks rising above the Snake River.. Reaching the boundary of Yellowstone, we board heated snowcoaches that convey us into the pristine winter splendor of America's first national park. We stop at West Thumb Geyser Basin on the edge of Yellowstone Lake, looking along the way for moose, river otters and trumpeter swans before arriving at Old Faithful Snow Lodge. Because winter access to the park's interior is limited to snow vehicles, an overnight stay here is a coveted experience. In silent seclusion, witness the park's most famous geothermal feature, Old Faithful geyser, erupt in a crystalline veil of spray. And on a clear night, we may even get to watch it shoot skyward by the light of the moon.

Day 4: Hayden Valley / Mammoth Hot Springs / Northern Range Wolf Tracking

Today we traverse Yellowstone's interior by snowcoach on our transfer from Old Faithful to Mammoth Hot Springs. This over-the-snow journey gives us access to remote geothermal areas, where steaming features remain active even in the coldest months. As we pass through Hayden Valley, an open expanse of prime wildlife habitat, look for bison, red fox, coyote and other animals adapted to winter and active on the landscape. Along the way, our guides share insights into Yellowstone's seasonal ecology, with ample chances to photograph wildlife and the wintry white landscape. Arriving at Mammoth Hot Springs in the afternoon, we often see elk near the white travertine terraces. Here, thermal water flows over limestone formations shaped by mineral deposits and heat-loving microorganisms called thermophiles, which create vivid color patterns across the rock. As evening approaches, continue into the Northern Range, a key corridor for winter wildlife. Bison are frequently spotted, their heavy coats cloaked in frost, and it's here that we begin our search for gray wolves, which roam this region year-round.

Yellowstone's Northern Range remains the best place in the world to observe wolves the wild, though they are almost always seen at a distance with the use of our guides' high-powered spotting scopes. The next two days are devoted to tracking these elusive predators alongside other more readily seen wildlife. Although wolf sightings are never guaranteed—pack movements are unpredictable and wolves tend to avoid people—our Expedition Leader is a skilled tracker and educator. We also collaborate with local researchers who provide up-to-date sighting reports, increasing our chances of locating active pack. After a full day in the field, we arrive at our hotel near Yellowstone's northern boundary, where we spend the next two nights.



Discovering Our Planet Together

Day 5: Northern Range & Lamar Valley Wolf Safari / Cooke City—Private Gallery Visit

A full day is ours to scout for Yellowstone's legendary wolves and other wildlife. Reintroduced to the park in 1995 amid much controversy, the gray wolf was returned to this native ecosystem after a 70-year absence following a policy of government-sanctioned eradication. Since then, they have flourished, supported by bountiful prey including a multitude of elk. Yet much rancor continues to surround their presence, and we learn in detail from our guides about the current conditions in which wolves exist within the greater Yellowstone area. As the wolves have restored more balance to the natural ecosystem, elk numbers have dropped, and we may not be as likely to see as many wolves as visitors did several years ago. If we are especially lucky, though, we might see a pack test an elk herd for a weak or sick animal, or spot lone individuals foraging on their own. But even if the wolves remain elusive, the winter landscape is magical, and we're sure to see plenty of other wildlife native to the park.

After an exhilarating morning on safari, continue east to Cooke City for a visit to the Hartman Gallery, with a slide presentation by Dan Hartman. Dan is a local naturalist and renowned Yellowstone wildlife photographer whose wolf images are widely acclaimed. He'll share insightful observations about wolf behavior gleaned from countless hours in their presence, as well as tips for pursuing photos of wolves and other wildlife. In the waning light of mid-afternoon, we head back across the Lamar Valley for more wolf tracking, knowing our chances to see them are best at dawn and dusk.

Day 6: Lamar Valley Wolf Tracking / Paradise Valley / Bozeman

As dawn illuminates the snowy meadows of the Lamar Valley and the peaks of the Northern Range, we return once more in search of wolves. If we are fortunate to sight them, our onboard spotting scope enhances our observation of their activities from a distance without disturbing their natural behavior. Many of our Expedition Leaders have worked for years with the field researchers who track these wolves daily, and together they provide us every opportunity to find these intriguing animals in their natural surroundings. Returning to Mammoth Hot Springs and exiting the park once more, we leave Yellowstone's frozen silence and continue up the Paradise Valley along the Yellowstone River, flanked by the Absaroka and Gallatin ranges on either side. Reaching Bozeman for a final night, we gather for a farewell dinner this evening.

Day 7: Bozeman / Depart

If your flight schedule permits, you may enjoy exploring Bozeman on your own today. This historic Old West/New West town, with a rich mining and trapping heritage, boasts 40 individual properties on the National Register of Historic Places. It is home to Montana State University, with a thriving contemporary economy built on growing tourism and tech sectors. With a wide range of cultural and outdoor activities, Bozeman offers plenty to do. A transfer to the airport is included to meet your departing flight.



Discovering Our Planet Together



Accommodation Details:

Old Faithful Snow Lodge
Mammoth Hot Springs Hotel
Explorer Cabins at Yellowstone
Ridgeline Hotel at Yellowstone
Armory Hotel
The Rockwell Inn at Jackson Hole

For detailed descriptions, visit
nathab.com/us-national-parks-tours/yellowstone-wolves-wildlife-adventure/accommodations

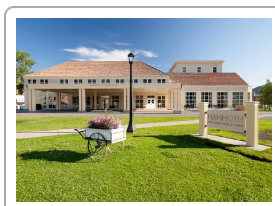
Yellowstone: Ultimate Wolf & Wildlife Safari Accommodations

A Rare Winter Wildlife Expedition Deep into Yellowstone & Grand Teton National Parks



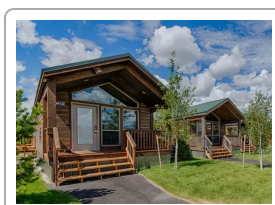
Old Faithful Snow Lodge

Located near Yellowstone's most famous geyser, Old Faithful, the Snow Lodge is the newest of Yellowstone's full-service hotels and has been recognized with the Cody Award for Western Design.



Mammoth Hot Springs Hotel

Built in 1936 near the north entrance of Yellowstone National Park, the Mammoth Hot Springs Hotel is a welcoming lodge built in the Art Moderne architectural style and is famed for its signature map room containing a large wooden map of the United States.

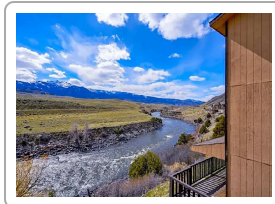


Explorer Cabins at Yellowstone

These cabins in the heart of West Yellowstone are conveniently located near the park's west entrance, offering rustic appeal on the outside with plenty of amenities inside for a truly comfortable stay.

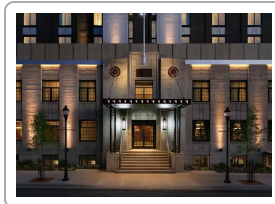


Discovering Our Planet Together



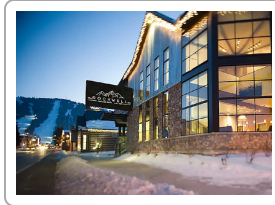
Ridgeline Hotel at Yellowstone

Our rooms at this well-appointed boutique hotel overlook the Yellowstone River, in walking distance of the historic center of Gardiner, the northern gateway to Yellowstone National Park.



Armory Hotel

One block off historic Main Street, Bozeman's only 4-star hotel melds old and new to create sophisticated boutique lodgings that honor the heritage of the landmark Armory building.



The Rockwell Inn at Jackson Hole

Ideally located in the heart of Jackson, Wyoming, the Rockwell Inn accommodates guests in an atmosphere of rustic mountain elegance that perfectly blends Old West heritage with contemporary comforts.



Discovering Our Planet Together

Wolves, Elk, Bison & More on One Epic Winter Wildlife Adventure!

You simply won't find a more comprehensive winter itinerary in Yellowstone Country. Our peerless wildlife odyssey includes all the highlights, including the Grand Tetons and extended wolf-search opportunities in Yellowstone's Lamar Valley. We capitalize on the quiet season when wildlife viewing is best: crowds are non-existent, animals stand out against winter's white mantle, and Yellowstone's hidden pockets feel like ours alone. Here's what makes this adventure so distinctive:

1

A Small Group Enhances Wildlife Observation

With fewer travelers, we can use smaller vehicles with access to backroads and more remote areas. Explore with approximately 13 guests plus two guides and an adventure assistant. In a nimble small group, we can move quickly to places where wolves and other wildlife have recently been spotted, and to observe without disturbing them.

2

Two Expedition Leaders for the Utmost in Attention & Interpretation

Travel with two naturalist guides whose in-depth knowledge and experience mean better, closer and more inspiring encounters with natural habitats and wildlife. With two guides, we can divide the group into two vehicles, offering the utmost in personalized interpretation. And we can split up for excursions based on physical ability and interest. You won't find a better guide-to-guest ratio!

3

Exclusive Nat Hab Safari Cruisers with Pop-Top Roofs

A far cry from the typical buses or vans other companies use, Nat Hab has crafted new Mercedes Sprinters into specialty **North America Safari Cruisers**. Featuring luxury bucket seats, USB chargers, expansive side windows and a pop-top roof offering 360° views on the landscape, these impressive vehicles provide a superlative wildlife viewing experience, not to mention exceptional comfort. Every guest has a window seat and plenty of room for camera equipment and other gear. These exclusive vehicles make a big difference!

4

Access the Heart of Yellowstone by Snowcoach

Much of Yellowstone National Park, including the Old Faithful area, is off-limits to regular vehicles in winter. But you won't miss out: We get you there via the park's newest state-of-the-art snowcoaches, with Bigfoot tires to reduce noise as we travel through quiet, wild habitat.



Discovering Our Planet Together

5

Enjoy Coveted Stays at Secluded Yellowstone Destinations

Very few visitors have the opportunity to stay at Old Faithful Snow Lodge near Old Faithful geyser. Inaccessible by road during winter, our access is via overland snowcoach—a trip highlight in its own right.

6

Travel by Horse-Drawn Sleigh through the National Elk Refuge

The National Elk Refuge in Jackson Hole protects and manages winter habitat for the nationally significant Jackson elk herd and for other big game and endangered birds. On a private horse-drawn sleigh ride, get close to the thousands of elk that winter here.

7

Quality Time with Local Nature Photographers

Over the years, we've cultivated relationships with many locals, including Dan Hartman, a renowned regional naturalist and photographer who lives just outside the bounds of Yellowstone National Park in Montana. We visit Dan at the Hartman Gallery in Cooke City for a private presentation on wildlife photography. Acclaimed for his images of wolves and other Yellowstone wildlife, Dan will share tips for capturing the best shots of these often-elusive animals.

8

Your Expedition Leaders are Professional Biologists, Naturalists and Educators

Our Expedition Leaders know the Greater Yellowstone Ecosystem and its wildlife intimately. They're in constant contact with local wolf researchers, obtaining the most current insider knowledge of wolf locations and activity. Our guides average a decade's experience leading trips in this region, and they receive additional training and resources from WWF scientists. We're proud that our Expedition Leaders are the ones called upon to train and teach new local guides. **See Expedition Leader bios** with traveler comments regarding the quality of our leaders.

9

Our Quality-Value Guarantee Ensures Your Outstanding Winter Safari Experience

With Natural Habitat Adventures, you receive our exclusive guarantee that clearly states that we will meet the high expectations we set forth in our promotional materials. To our knowledge, this is the most ambitious guarantee made by any adventure travel company.

10

Feel Good About Your Carbon-Neutral Journey

We care deeply about our planet, as we know you do. When you travel with us, the carbon emissions from your trip are 100% offset—including your round-trip flights from home. Natural Habitat Adventures has been the world's first carbon-neutral travel company since 2007.



Discovering Our Planet Together

11

Natural Habitat Adventures is World Wildlife Fund's Travel Partner

Because of our commitment to environmentally friendly travel, as well as the exceptional quality of our small-group nature adventures, World Wildlife Fund, the world's leading environmental conservation organization, has named Natural Habitat Adventures its worldwide travel partner—a designation that makes us exceedingly proud!



Discovering Our Planet Together



Dates & Pricing Summary:

Prices:
From \$7995

Group Size:
Limited to 13
Travelers

Yellowstone: Ultimate Wolf & Wildlife Safari Dates, Pricing & Info

A Rare Winter Wildlife Expedition Deep into Yellowstone & Grand Teton National Parks

2026 Departures

Departure	Return	Notes
Jan 2, 2026	Jan 8, 2026	\$8195 USD Bozeman to Jackson, Habitat Club Pricing Available
Jan 2, 2026	Jan 8, 2026	\$8195 USD Jackson to Bozeman
Jan 6, 2026	Jan 14, 2026	\$10995 USD Photo Expedition
Jan 10, 2026	Jan 16, 2026	\$8195 USD Bozeman to Jackson
Jan 10, 2026	Jan 16, 2026	\$7995 USD Jackson to Bozeman
Jan 17, 2026	Jan 23, 2026	\$8195 USD Jackson to Bozeman
Jan 24, 2026	Jan 30, 2026	\$8195 USD Bozeman to Jackson
Jan 24, 2026	Jan 30, 2026	\$8195 USD Jackson to Bozeman



Discovering Our Planet Together

Dates & Pricing Summary:

Prices:
From \$7995

Group Size:
Limited to 13
Travelers

Departure	Return	Notes
Jan 31, 2026	Feb 6, 2026	\$8195 USD Bozeman to Jackson
Jan 31, 2026	Feb 6, 2026	\$8195 USD Jackson to Bozeman
Feb 7, 2026	Feb 13, 2026	\$8195 USD Bozeman to Jackson
Feb 7, 2026	Feb 13, 2026	\$8195 USD Jackson to Bozeman
Feb 8, 2026	Feb 16, 2026	\$11195 USD Photo Expedition
Feb 14, 2026	Feb 20, 2026	\$8195 USD Bozeman to Jackson
Feb 14, 2026	Feb 20, 2026	\$8195 USD Jackson to Bozeman
Feb 17, 2026	Feb 25, 2026	\$11195 USD Photo Expedition
Feb 21, 2026	Feb 27, 2026	\$8195 USD Bozeman to Jackson
Feb 21, 2026	Feb 27, 2026	\$8195 USD Jackson to Bozeman

2027 Departures

Departure	Return	Notes
! Dates not confirmed for 2027		
Jan 3, 2027	Jan 9, 2027	\$8495 USD Bozeman to Jackson
Jan 3, 2027	Jan 9, 2027	\$8495 USD Jackson to Bozeman
Jan 11, 2027	Jan 17, 2027	\$8495 USD Bozeman to Jackson
Jan 11, 2027	Jan 17, 2027	\$8495 USD Jackson to Bozeman
Jan 18, 2027	Jan 24, 2027	\$8495 USD Bozeman to Jackson
Jan 18, 2027	Jan 24, 2027	\$8495 USD Jackson to Bozeman
Jan 23, 2027	Jan 29, 2027	\$8495 USD Jackson to Bozeman
Jan 25, 2027	Jan 31, 2027	\$8495 USD Bozeman to Jackson
Jan 30, 2027	Feb 5, 2027	\$8495 USD



Discovering Our Planet Together

Dates & Pricing Summary:

Prices:
From \$7995

Group Size:
Limited to 13
Travelers

Departure	Return	Notes
! Dates not confirmed for 2027		
		Bozeman to Jackson
Feb 1, 2027	Feb 7, 2027	\$8495 USD Bozeman to Jackson
Feb 1, 2027	Feb 7, 2027	\$8495 USD Jackson to Bozeman
Feb 8, 2027	Feb 14, 2027	\$8495 USD Bozeman to Jackson
Feb 8, 2027	Feb 14, 2027	\$8495 USD Jackson to Bozeman
Feb 15, 2027	Feb 21, 2027	\$8495 USD Bozeman to Jackson
Feb 15, 2027	Feb 21, 2027	\$8495 USD Jackson to Bozeman
Feb 16, 2027	Feb 22, 2027	\$8495 USD Bozeman to Jackson
Feb 22, 2027	Feb 28, 2027	\$8495 USD Bozeman to Jackson
Feb 22, 2027	Feb 28, 2027	\$8495 USD Jackson to Bozeman
Feb 24, 2027	Mar 2, 2027	\$8495 USD Jackson to Bozeman



Discovering Our Planet Together

Pricing

See <https://nathab.com/us-national-parks-tours/yellowstone-wolves-wildlife-adventure/dates-fees> for the latest pricing details.

Included

Accommodations, services of Nat Hab's professional Expedition Leader(s) and local staff, transportation in **Nat Hab's North America Safari Cruisers** and local snowcoaches, all meals from dinner on Day 1 through breakfast on final day, some gratuities, airport transfers on Day 1 and final day, gear including warm parkas and winter boots, use of Nat Hab scopes and binoculars, all activities and entrance fees, all taxes, permits and service fees.

Not Included

Travel to and from the start and end point of your trip, alcoholic beverages, some gratuities, passport and visa fees (if any), optional activities, items of a personal nature (phone calls, laundry and internet, etc.), airline baggage fees, airport and departure taxes (if any), optional travel protection and medical evacuation insurance.

Important Information About This Trip

While the Lamar Valley and Yellowstone National Park offer some of the best opportunities to see wolves in the wild, these animals are still very elusive, and they usually do not come in close range of humans. This trip offers a totally natural, uncontrived experience, and as a result, most wolf viewing is done at a distance through spotting scopes. This allows us to watch the packs go about their normal behavior uninfluenced by the presence of humans. It is important to understand that it is incredibly difficult to see the wolves without the use of a spotting scope (Nat Hab provides spotting scopes on your trip). Often, the best way to get photos of the wolves is with a cell phone camera through a spotting scope. Your Expedition Leader will help you with this technique, called "digiscoping." While a long lens is a must for photographers, even then, we can't guarantee excellent shots of the wolves. However, the sheer beauty and grandeur of the Greater Yellowstone Ecosystem provides magnificent nature imagery, and we are likely to see plenty of the region's other iconic species. Please note that winter temperatures in the region are often very cold, and we do spend a lot of time standing in the outdoors. At times, temperatures may fall below 0° F. On some dates, our itinerary operates in the reverse order of what is listed on our trip page. Please contact our office for details.

Getting There & Getting Home

Arrival: Arrive by 4 pm in order to attend a welcome dinner beginning at 6 pm on Day 1.

Departure: You may depart at any time on the final day of your itinerary.



Natural Habitat & WWF: Discovering Our Planet Together

Natural Habitat Adventures • PO Box 3065 • Boulder, CO USA 80307

USA & Canada: 800-543-8917 • International: 303-449-3711

© 2025 Natural Habitat Adventures

WWF's membership travel program is operated by Natural Habitat Adventures (Nat Hab). To date, Nat Hab has provided more than \$6 million in support of WWF's mission and will continue to give 1% of gross sales plus \$175,000 annually through 2028. WWF® and ©1986 Panda Symbol are owned by WWF. All rights reserved.